



Barry Lawrence Ruderman Antique Maps Inc.

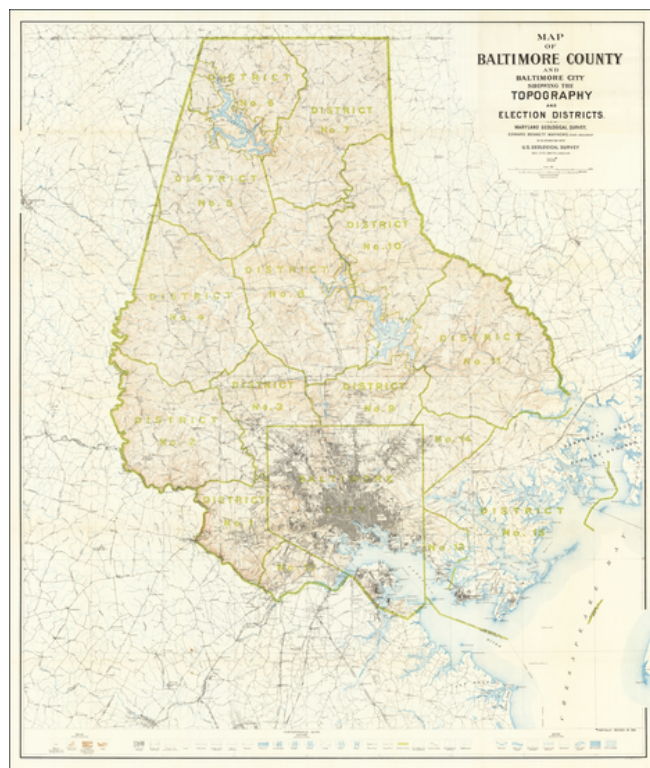
7407 La Jolla Boulevard
La Jolla, CA 92037

www.raremaps.com

(858) 551-8500
blr@raremaps.com

Map of Baltimore County and Baltimore City Showing The Topography and Election Districts -- Maryland Geological Survey1824

Stock#: 62703
Map Maker: Maryland Geological Society
Date: 1924 (1930)
Place: Baltimore
Color: Color
Condition: VG
Size: 39 x 46 inches
Price: SOLD



Description:

Detailed topographical map of Baltimore County, published by the Maryland Geological Society.

The map is divided into Election Districts with three different keys describing:

- Topographical Relief
- Conventional Signs
- Types of Water

Detailed Condition: