



# Barry Lawrence Ruderman Antique Maps Inc.

7407 La Jolla Boulevard  
La Jolla, CA 92037

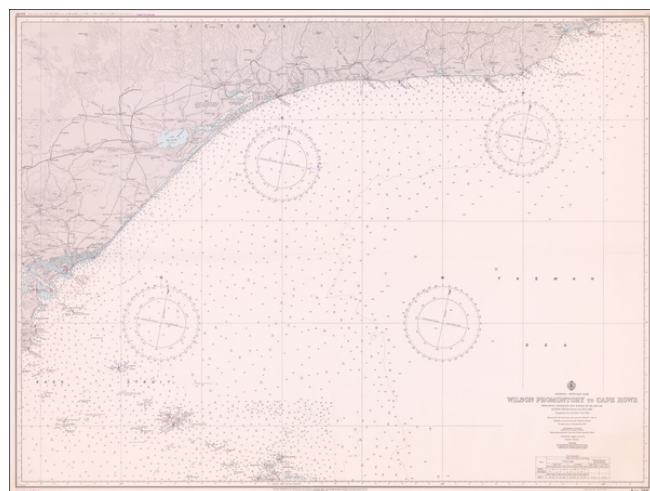
[www.raremaps.com](http://www.raremaps.com)

(858) 551-8500  
[blr@raremaps.com](mailto:blr@raremaps.com)

---

## Australia -- South East Coast Wilson Promontory to Cape Howe From Royal Navy Surveys of 1949 and 1953 . . .

**Stock#:** 60857  
**Map Maker:** Royal Australian Navy  
Hydrographic Office  
  
**Date:** 1955  
**Place:** Australia  
**Color:** Uncolored  
**Condition:** VG+  
**Size:** 45 x 33.5 inches  
  
**Price:** SOLD



### Description:

Fine sea chart extending from Cape Howe Marine National Park to Wilson Promontory, prepared for the Royal Australian Navy.

### Detailed Condition: