



Barry Lawrence Ruderman Antique Maps Inc.

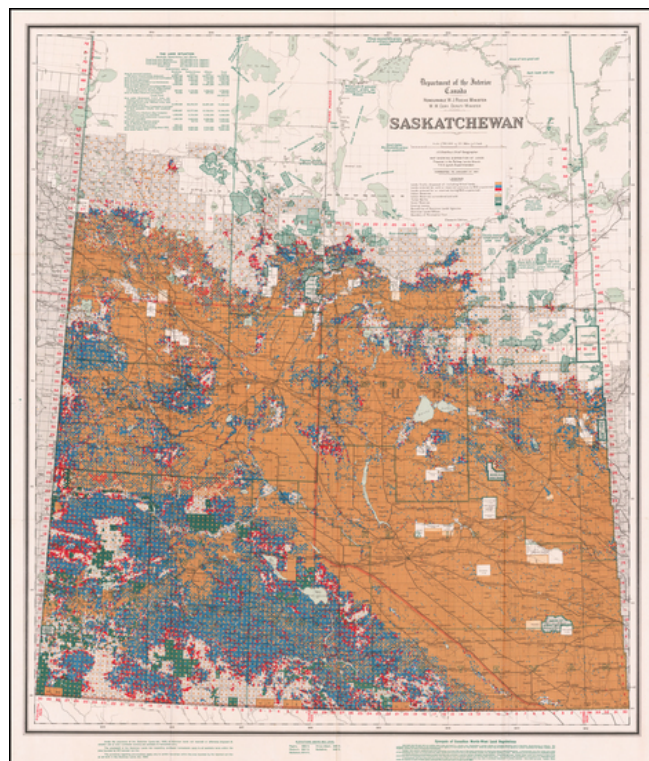
7407 La Jolla Boulevard
La Jolla, CA 92037

www.raremaps.com

(858) 551-8500
blr@raremaps.com

Saskatchewan . . . Corrected to January 1st 1913.

Stock#: 60392
Map Maker: Canadian Department of the Interior
Date: 1913
Place: Ottawa
Color: Color
Condition: VG+
Size: 32.5 x 39 inches
Price: SOLD



Description:

Highly detailed colored coded map of Saskatchewan, published by the Department of the Interior.

The table at the top, labeled land situation, provides a breakdown of lands in Manitoba, Saskatchewan and Alberta, including

- Total area surveyed (not covered by water)
- Water covered lands
- Parish and River Lot Settlements
- Forest Reserves
- Indian Reserves
- Homesteading, Northwest Half Breed Strip, Military Scrip, etc.
- Area granted to Railway Companies
- Hudson Bay Company Lands
- School and endowment
- Irrigated lands



**Barry Lawrence Ruderman
Antique Maps Inc.**

7407 La Jolla Boulevard
La Jolla, CA 92037

www.raremaps.com

(858) 551-8500
blr@raremaps.com

Saskatchewan . . . Corrected to January 1st 1913.

- Manitoba Swamp lands
- Grain Crop lands
- Wheat lands

The map color coding shows:

- Lands finally disposed of (including school lands)
- Lands entered for sold or reserved but unpatented
- Lands entered for or reserved during 1912 (unpatented)
- Indian Reserves
- Indian Reserves surrendered and sold
- Timber Berths
- Forest Reserves
- Grazing Leases
- Boundary of Dominion Land Agencies
- Dominion Lands Offices
- Boundary of Pre-emption Tract.

Detailed Condition: