



# Barry Lawrence Ruderman Antique Maps Inc.

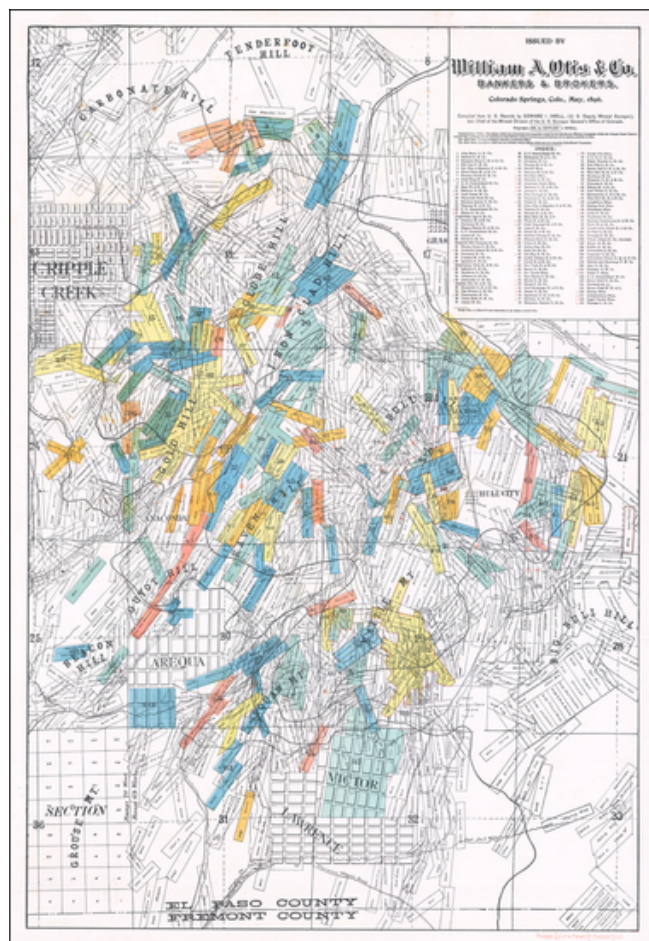
7407 La Jolla Boulevard  
La Jolla, CA 92037

[www.raremaps.com](http://www.raremaps.com)

(858) 551-8500  
[blr@raremaps.com](mailto:blr@raremaps.com)

## [ Map of the Cripple Creek Gold Mining District ] Issued by William A. Otis, Bankers & Brokers, Colorado Springs, Colo., May 1896

**Stock#:** 60221  
**Map Maker:**  
**Date:** 1896  
**Place:** Colorado Springs  
**Color:** Color  
**Condition:** VG+  
**Size:** 23.5 x 34 inches  
**Price:** SOLD



### Description:

Rare separately published map of the Cripple Creek Mining District, published in Colorado Springs.

The map notes that it was compiled from U.S. Records by Edward I. Snell, (U.S. Deputy Mineral Surveyor), late Chief of the Mineral Division of the U.S. Survey General's Office of Colorado and Copyrighted by Snell in 1895.

The map also includes wagon roads, railroad lines (Midland Terminal and Cripple Creek Rail Road),

The map covers several towns, including:



**Barry Lawrence Ruderman  
Antique Maps Inc.**

7407 La Jolla Boulevard  
La Jolla, CA 92037

www.raremaps.com

(858) 551-8500  
blr@raremaps.com

---

**[ Map of the Cripple Creek Gold Mining District ] Issued by William A. Otis, Bankers & Brokers, Colorado Springs, Colo., May 1896**

- Cripple Creek
- Arequa
- Lawrence
- Victor
- Hull City
- Altman
- Grassy Creek

The explanatory note provides:

*The claims which are colored are the properties owned by the best known Mining Companies within the Cripple Creek District, and this Map embraces all the territory which is producing Gold-bearing ore in paying quantity to date.*

*The Red Star in every instance denotes a producing Mine.*

*The Red Stars on claims which are not colored, denote Mines which are not owned by Joint Stock Companies.*

**Rarity**

The map is very rare. OCLC locates only the examples at Yale, Colorado School of Mines, Pike's Peak Library and Princeton.

**Detailed Condition:**