



Barry Lawrence Ruderman Antique Maps Inc.

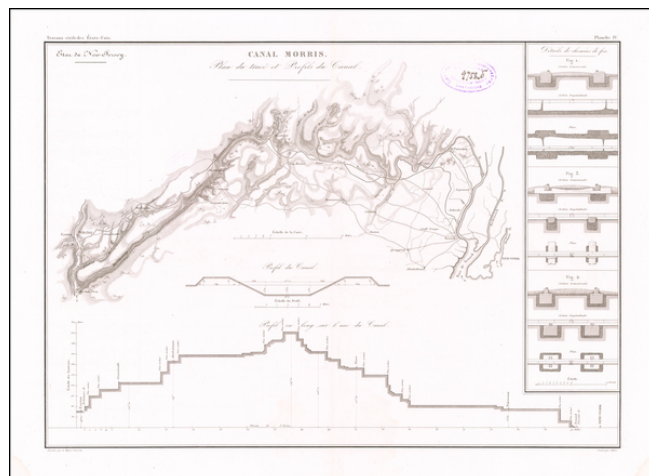
7407 La Jolla Boulevard
La Jolla, CA 92037

www.raremaps.com

(858) 551-8500
blr@raremaps.com

Canal Morris Plan du trace et Profils du Canal

Stock#: 60194
Map Maker: Poussin
Date: 1834
Place: Paris
Color: Uncolored
Condition: VG
Size: 24 x 18 inches
Price: SOLD



Description:

The Morris Canal

Detailed map illustrating the course and profiles for the Morris Canal, extending from The Delaware River to Newark Bay.

In 1824 the Morris Canal & Banking Company (MC&BC) was chartered to build a canal that would carry coal, mined in Pennsylvania, to developing markets along the eastern seaboard. The canal would pass through the heart of New Jersey's iron district and provide the long-needed transportation system that would create new commercial activity and enable rustic settlements like Dover and Rockaway to grow into thriving industrial towns. The canal opened for business in 1831 and then, in 1836, was expanded from Newark to New York Harbor at Jersey City.

Guillaume Tell Poussin

Guillaume Tell Poussin was born in 1796 in the department of the Seine and Oise, in France. His father was a painter of some celebrity, who has left many fine works in the galleries of Versailles and Rouen. Introduced, while a child, to the favor of Napoleon, it was ordered by a special decree that, as a descendant of the great Nicholas Poussin, whose works are among the chief glories of French art, William Tell Poussin should be educated at the imperial school of Rouen. In Rouen, Guillaume entered this national academy of engineering.

In 1815, Guillaume travelled to America, arriving at New York in November, 1815. After a short residence in New-York he proceeded to Philadelphia and the next spring he moved to Washington, where he had



Barry Lawrence Ruderman Antique Maps Inc.

7407 La Jolla Boulevard
La Jolla, CA 92037

www.raremaps.com

(858) 551-8500
blr@raremaps.com

Canal Morris Plan du trace et Profils du Canal

heard that he could be profitably employed in the rebuilding of the capitol, which the British army had destroyed in the late war. He worked as an architect for about a year, when, several leading senators and representatives having become acquainted and signed a petition to President Madison for his admission to the corps of Topographical Engineers, which was then to be organized, and he was transferred to the United States Army. A short time after, General Bernard, whom Mr. Crawford, the American Minister at Paris, had engaged to be the chief of the Topographical Engineers, arrived in Washington, and assuming his office.

Poussin became aid-de Camp to General Bernard and left Washington with him for a military reconnaissance of the coast on the Gulf of Mexico, and of the delta of the Mississippi. They spent a year and a half in New Orleans and in 1817 returned to Washington and submitted to the President a memoir of their operations. It was upon this first report, presented by the Executive, on the Military Defenses of the United States,—a report drawn up in a very large degree by the hand of M. Poussin, and illustrated throughout with his discovery and suggestion,—that Congress, by an almost unanimous vote, authorized the erection of the great line of our military defenses, adopting the recommendations of the commissioner without even the slightest alteration.

The Board of Military Engineers entered subsequently on the yearly execution of their important duty of examining the coast previous to determining the actual sites and descriptions of the works of defense which they afterwards delineated. The young topographical engineer continued in his arduous scientific labors, and thus contributed largely in the perfecting of that great national scheme. It was in these military operations, and afterwards in the surveys for roads and canals, which, under the supervision of a Board of Internal Improvements, were confided to a portion of the same officers, assisted by civil engineers, that Poussin rendered himself so efficient as a practical and scientific surveyor, and became so perfectly familiar with all the internal resources of our extensive country, which he had thus most remarkable opportunities to study and appreciate, by crossing it in all directions, and, in fact, by visiting every state, and by following up and down every valley and river of the eastern half of the continent. Few men have had such occasion of studying visually the extent and resources of the republic; and the intelligent readers of the volume before us will acknowledge, that few persons have shown themselves more conversant with its astonishing advancement. His first publication was a description of the works to which he had contributed, under the title of "A History of the Internal Improvements of the United States his second, an account of all the railroads in this country, which had considerable influence in developing in Europe a disposition toward our policy in this respect, and entitles Major Poussin to the gratitude of all lovers of rapid and safe communication. It was reproduced in Belgium and Germany, and has long been a textbook upon its subject in those countries, as well as in France. His third work was the one now translated, *La Puissance Americaine*, in which he has displayed, most emphatically, his admiration of our institutions, and offered them as examples to communities aspiring after rational liberty. It may be said of



Barry Lawrence Ruderman Antique Maps Inc.

7407 La Jolla Boulevard
La Jolla, CA 92037

www.raremaps.com

(858) 551-8500
blr@raremaps.com

Canal Morris Plan du trace et Profils du Canal

it, that it is the American system rendered popular, by practical and convincing illustrations.

Major Poussin returned to France early in 1832. in the hope to cooperate in rendering popular in his own country some of the political institutions of the United States, to which he always attributed our great prosperity; but he was not fortunate enough to be admitted to active official life. He employed himself in his profession of surveyor, and superintended several important public works, and frequently in pamphlets and in contributions to the journals, labored for the dissemination of American ideas. At last, when the Revolution of February, 1848, broke out, he was chosen, with the greatest unanimity by the Provisional Government, to be the Representative of Republican France near the Government of the United States. It was deemed the highest compliment of which France was capable, that she sent as her minister the citizen most conversant with our affairs, and most eminent for admiration of our institutions. His arrival in this country, and the misunderstanding with the cabinet at Washington, which resulted in his recall by President Bonaparte, cannot have been forgotten by the observant reader. We believe that few who have carefully studied the conduct of Major Poussin in that affair, will be disposed, in the slightest degree, to censure him, while the entire history will readily be consigned to oblivion by the American who is in any degree sensitive upon the subject of our national honor.

Rarity

The map is very rare on the market. This is the first example we have ever seen and we can find no examples of the book appearing on the market with the map in a dealer catalog or auction record.

Detailed Condition:

Includes an illegible stamp from a European Library.