



# Barry Lawrence Ruderman Antique Maps Inc.

7407 La Jolla Boulevard  
La Jolla, CA 92037

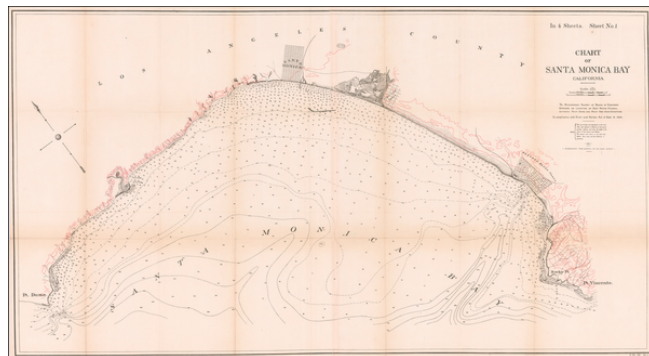
[www.raremaps.com](http://www.raremaps.com)

(858) 551-8500  
[blr@raremaps.com](mailto:blr@raremaps.com)

---

## Chart of Santa Monica Bay California . . . 1890

**Stock#:** 60026  
**Map Maker:** U.S. Army Corps of Engineers  
**Date:** 1890  
**Place:** Washington  
**Color:** Uncolored  
**Condition:** VG  
**Size:** 42.5 x 23 inches  
**Price:** SOLD



### Description:

#### *Fine 19th Century Sea Chart of Santa Monica Bay*

Detailed 4 sheet map of Santa Monica Bay, illustrating a report considering the feasibility of locating a deep water harbor in Santa Monica Bay, conducted by the Army Corps of Engineers in 1890.

The full title of the map is: *Chart of Santa Monica Bay California. To Accompany Report of Board of Engineer Officers on Location of a Deep Water Port Between Port Dume and Point San Juan Capistrano . . . 1890.*

The finest large format map of Santa Monica Bay published in the 19th Century.

### Detailed Condition:

Minor toning along folds.