



**Barry Lawrence Ruderman
Antique Maps Inc.**

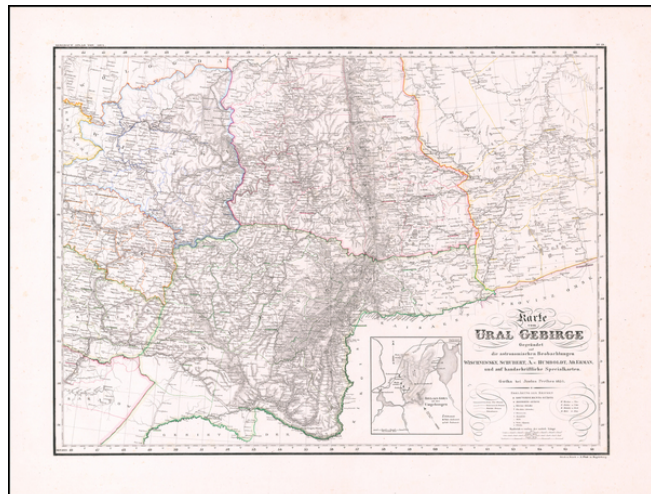
7407 La Jolla Boulevard
La Jolla, CA 92037

www.raremaps.com

(858) 551-8500
blr@raremaps.com

**Karte vom Ural Gebirge Gegrundet auf die austromischen Beobachtungen von
Wischnewsky, Schubert, A. v. Humboldt, Ad. Erman, und auf handschriftliche
Specialkarten. . . 1837**

Stock#: 59805
Map Maker: Perthes
Date: 1837
Place: Gotha
Color: Outline Color
Condition: VG+
Size: 28.5 x 21.5 inches
Price: \$575.00



Description:

Rare and highly detailed map of the Ural region, with a large inset of the Bjelaja Gora area.

The map shows post roads, government roads, district roads, mountains, rivers, lakes, towns, boundaries and a host of other details.

There are very few maps which focus on this region in the early 19th Century.

Detailed Condition: