



Barry Lawrence Ruderman Antique Maps Inc.

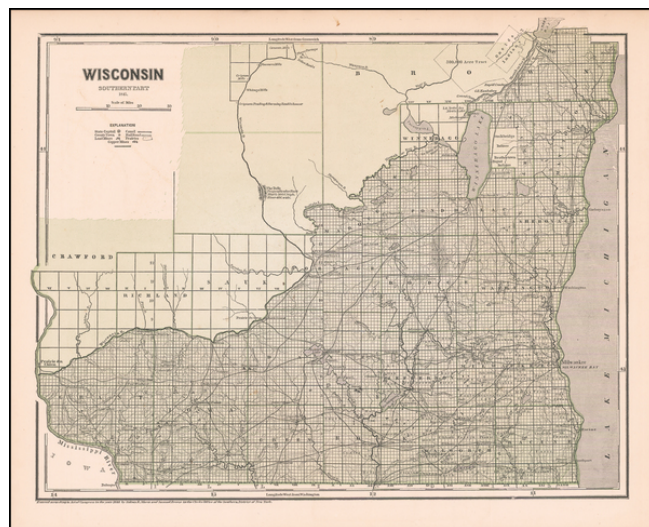
7407 La Jolla Boulevard
La Jolla, CA 92037

www.raremaps.com

(858) 551-8500
blr@raremaps.com

Wisconsin, Southern Part. 1845

Stock#: 59422
Map Maker: Morse & Breese
Date: 1845
Place: New York
Color: Color
Condition: VG+
Size: 15 x 12.5 inches
Price: SOLD



Description:

Marvelous and highly detailed map of a portion of Wisconsin, with excellent detail south of the Wisconsin River, and above the Dells in the area of Grignon's Mills and Trading and Farming Establishment. The area south of the River has been surveyed and shows towns, roads, rivers, townships, etc.

The surveys are just beginning in Sauk and Richland Counties. West of Green Bay, the Oneida Indians and a 300,000 acre tract are noted. Above Grignon Mills are Whitney Mills, Bloomers Mills and Conants Mills.

An essential map for American Map collectors, illustrating an important change in the history of printed maps and the only truly American cartographic publishing innovation.

Detailed Condition: