



**Barry Lawrence Ruderman
Antique Maps Inc.**

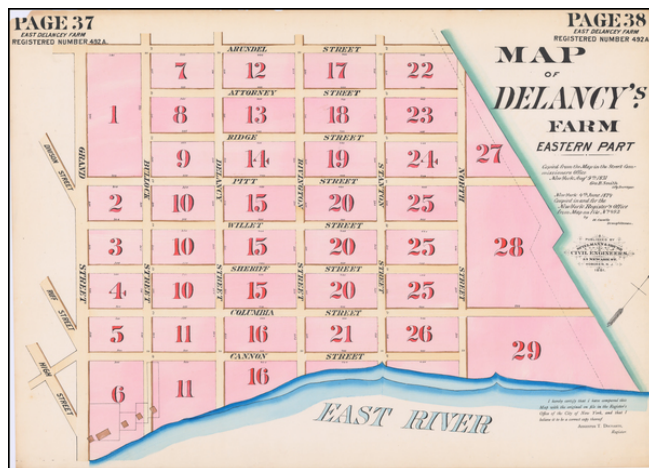
7407 La Jolla Boulevard
La Jolla, CA 92037

www.raremaps.com

(858) 551-8500
blr@raremaps.com

[Lower East Side / Manhattan] Map of Delancy's Farm Eastern Part.

Stock#: 59384
Map Maker: Spielmann & Brush
Date: 1881
Place: Hoboken, NJ
Color: Hand Colored
Condition: Good
Size: 36 x 26 inches
Price: \$ 345.00



Description:

Hand-colored lithographed map of part of the Lower East Side, New York City, published by Spielmann & Brush in their very rare atlas *Certified Copies of Original Maps of Property in New York City* (1881). The last copy of that atlas was on the market with a New York City bookdealer for \$12,500.

The map shows old farm plots and roads, as well as modern streets and lots, bounded by modern-day Grand Street, Houston Street, the East River, and Clinton Street.

This is where the Williamsburg Bridge leaves Manhattan.

Detailed Condition:

Edgewear barely affecting the printed image in the upper left.