



**Barry Lawrence Ruderman
Antique Maps Inc.**

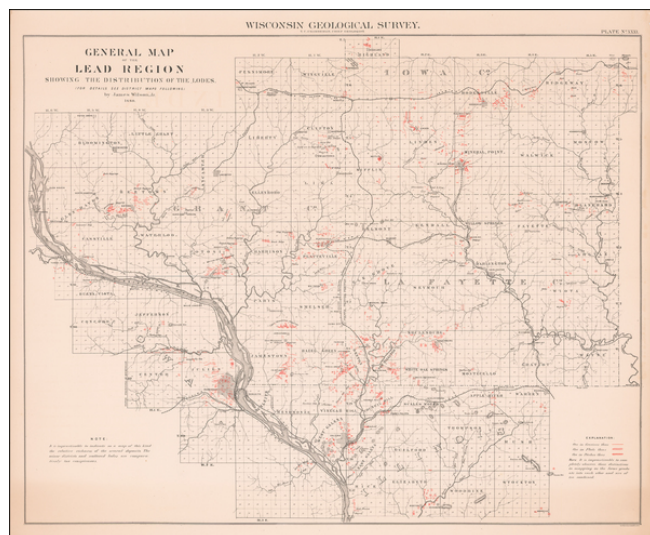
7407 La Jolla Boulevard
La Jolla, CA 92037

www.raremaps.com

(858) 551-8500
blr@raremaps.com

**General Map of the Lead Region Showing the Distribution of the Lodes . . . By James
Wilson, Jr. 1880**

Stock#: 59314
Map Maker:
Date: 1880
Place: n.p.
Color: Uncolored
Condition: VG
Size: 32.3 x 28.4 inches
Price: \$395.00



Description:

Scarce map of the Lead Region, including parts of Wisconsin, Illinois and Iowa, from the 1880 Geological Survey of Wisconsin.

The map was included in a Geological Atlas by T.C. Chamberlin and Chief Geologist R.D. Irving.

Detailed Condition:

Minor marginal chipping, discoloration and small tears, expertly repaired on verso.