



Barry Lawrence Ruderman Antique Maps Inc.

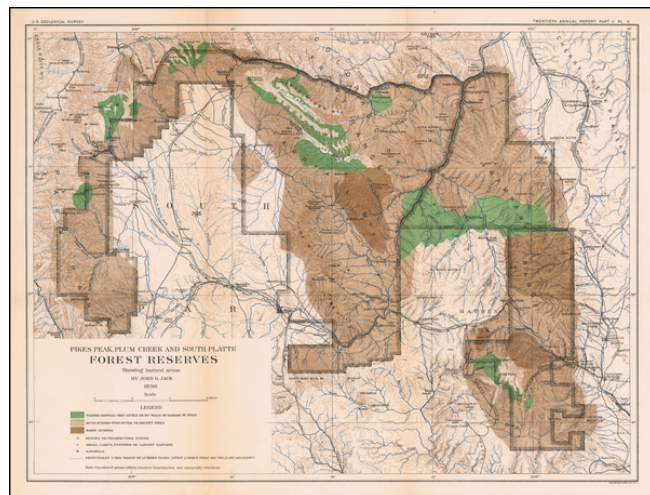
7407 La Jolla Boulevard
La Jolla, CA 92037

www.raremaps.com

(858) 551-8500
blr@raremaps.com

Pikes Peak, Plum Creek and South Platte Forest Reserves Showing burned areas By John G. Jack. 1898.

Stock#: 58416
Map Maker: U.S. Geological Survey
Date: 1898
Place: New York
Color: Color
Condition: VG
Size: 20.5 x 15.5 inches
Price: SOLD



Description:

A scarce early Colorado Forestry map, illustrating the forested regions.

The map differentiates between areas which are:

- Not burned or barely burned (green)
- Much burned over by old or recent fires (tan)
- Badly burned (brown)

The map also locates:

- Mining or Prospecting Towns
- Small Camps, Stations or Large Ranches
- Sawmills
- Principal Wagon and Lumber Roads

Detailed Condition: