



# Barry Lawrence Ruderman Antique Maps Inc.

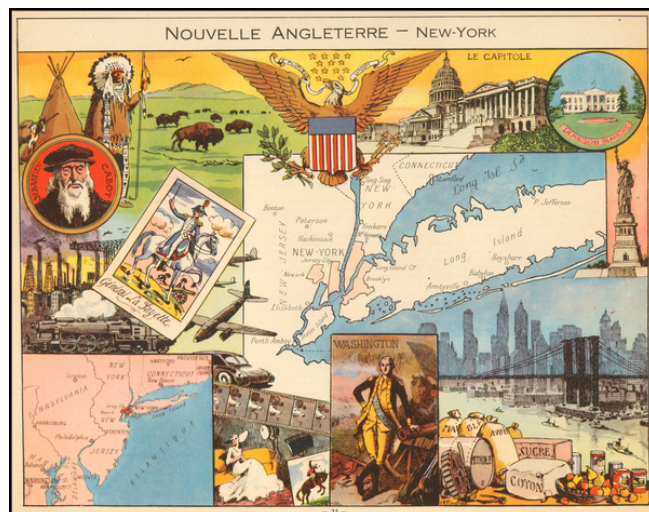
7407 La Jolla Boulevard  
La Jolla, CA 92037

[www.raremaps.com](http://www.raremaps.com)

(858) 551-8500  
[blr@raremaps.com](mailto:blr@raremaps.com)

## Nouvelle Angleterre - New - York

**Stock#:** 57728  
**Map Maker:** Pinchon  
**Date:** 1950  
**Place:** Paris  
**Color:** Color  
**Condition:** VG+  
**Size:** 11 x 9 inches  
**Price:** \$ 125.00



### Description:

Decorative pictorial map of New England and New York, published by Children's book illustrator JP Pinchon.

The map was used to educate primary school children in France in the first half of the 20th Century.

### Detailed Condition: