



Barry Lawrence Ruderman Antique Maps Inc.

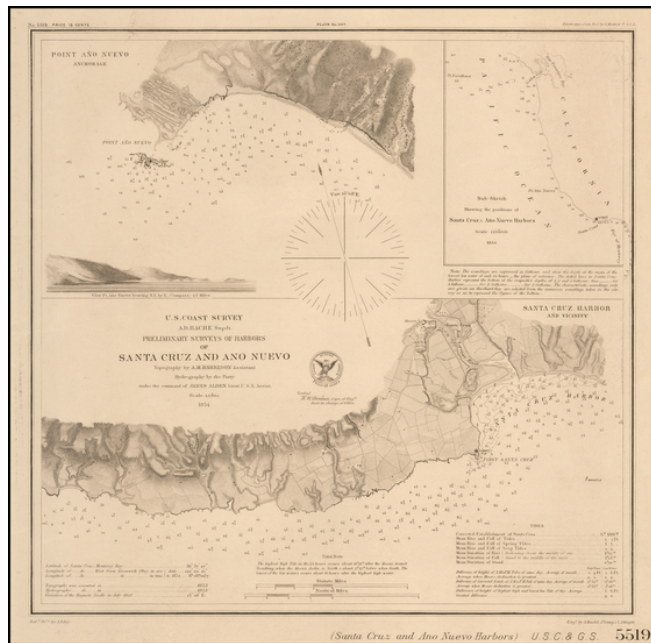
7407 La Jolla Boulevard
La Jolla, CA 92037

www.RareMaps.com

(858) 551-8500
blr@RareMaps.com

Preliminary Surveys of the Harbors of Santa Cruz and Ano Nuevo . . .1854

Stock#: 57574
Map Maker: U.S. Coast & Geodetic Survey
Date: 1854 *1878 ca)
Place: Washintgon
Color: Uncolored
Condition: VG+
Size: 12.5 x 12 inches
Price: \$475.00



Description:

Rare separately published charts of the area around Santa Cruz and Point Año Nuevo, on the coastline of Northern California.

The map includes a fine early profile view of Pt. Año Nuevo.

The detail around Santa Cruz is quite remarkable, including a location of the Mission, San Lorenzo River, stretching west to the area near Natural Bridges.

Detailed Condition: