



# Barry Lawrence Ruderman Antique Maps Inc.

7407 La Jolla Boulevard  
La Jolla, CA 92037

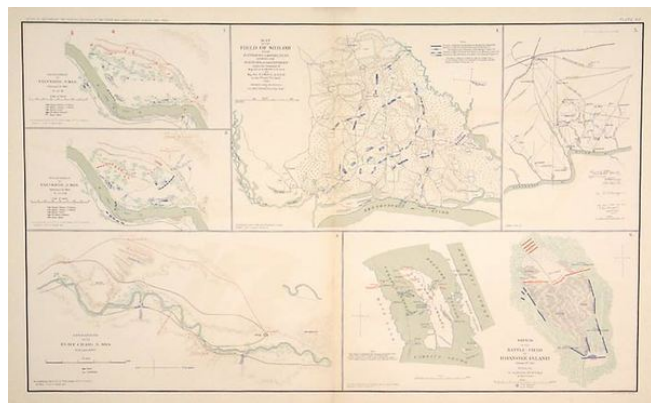
[www.raremaps.com](http://www.raremaps.com)

(858) 551-8500  
[blr@raremaps.com](mailto:blr@raremaps.com)

---

## Map of the Field of Shiloh [with] Battle-field of Roanoake Island [with] Operations at Ft. Craig, New Mexico [with] Engagement at Valverde, New Mexico, Feb. 21, 1862

**Stock#:** 5757  
**Map Maker:** Bien & Co.  
**Date:** 1891 -95  
**Place:** New York  
**Color:** Color  
**Condition:** VG  
**Size:** 27 x 16 inches  
**Price:** SOLD



### Description:

Highly detailed set of maps showing the battlefield positions, roads, rivers, towns, etc., in and around Shiloh, Roanoake Island and several interesting maps showing the Texans fighting the Union in New Mexico. Full of Battlefield information, fortification information, and a host of other information utilized by the War Department during the Civil War. The map was issued to accompany the monumental Atlas To Accompany The Official Records of the Union and Confederate Armies. 1861-1865. The publication of this work was the most comprehensive compilation of maps of the Civil War.

### Detailed Condition: