



**Barry Lawrence Ruderman
Antique Maps Inc.**

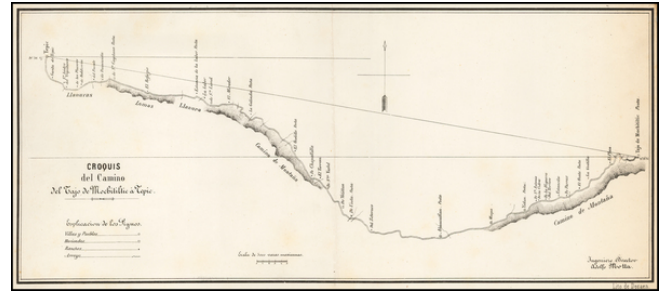
7407 La Jolla Boulevard
La Jolla, CA 92037

www.raremaps.com

(858) 551-8500
blr@raremaps.com

[The Road Guadalajara] Croquis del Camino del bajo de Mochitltic a Tepic

Stock#: 56380
Map Maker: Decaen
Date: 1856 circa
Place: Mexico
Color: Uncolored
Condition: VG
Size: 16 x 7 inches
Price: SOLD



Description:

Detailed map of a section of the road from Guadalajara to the Pacific Coast in Nayarit.

The map shows the road from Tepic, southeast toward Guadalajara, published in Mexico City and signed by Ingeniero Director Adolfo Motta. The map is a section of the road that extended to the Port of San Blas, approximately 30 miles to the west.

The map is based upon a manuscript map by J.A. Motta, drawn in 1856, as described by Manuel Orozco y Berra, in *Materials para una cartografie mexicana por el ingeniero Lic. Manuel Orozco y Berra*, published in Mexico City by the Sociedad Mexicana Geografia y Estadistica.

Detailed Condition:

Minor toning and soiling.