



**Barry Lawrence Ruderman
Antique Maps Inc.**

7407 La Jolla Boulevard
La Jolla, CA 92037

www.raremaps.com

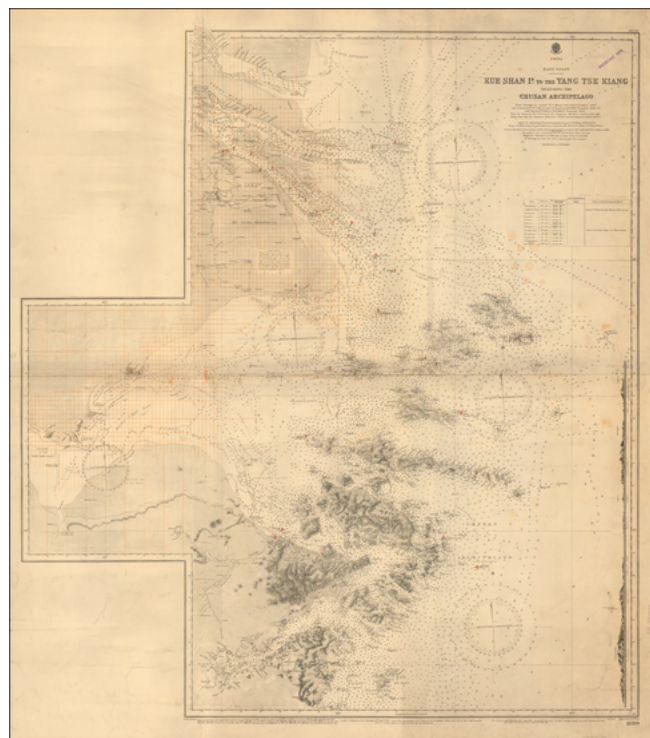
(858) 551-8500
blr@raremaps.com

**(Shanghai -- Redlined for Surveying) Kue Shan Is. to the Yang Tse Kiang Including
Chusan Archipelago From Surveys by Commr. W.U. Moore R.N., H.M.S. Rambler 1887
and Commanders W.U. Moore and L.S. Dawson R.N., H.M.S. Rambler, 1888-90, and
Captain W.U. Moore R.N., H.M.S. Penguin, 1892 . . .**

Stock#: 55505
Map Maker: British Admiralty

Date: 1883 (1933)
Place: London
Color: Uncolored
Condition: VG
Size: 35 x 39 inches

Price: SOLD



Description:

Redlined For Contemporary Use

Detailed sea chart of the mouth of the Yangtze River in the north to the Zhousan Island, published by the British Admiralty.

The chart includes thousands of soundings, islands, sailing directions and lighthouses, identified in red.

The map includes an elaborate redline grid, with evidence of a separate pencil grid below.

Detailed Condition:

Minor soiling.