



Barry Lawrence Ruderman Antique Maps Inc.

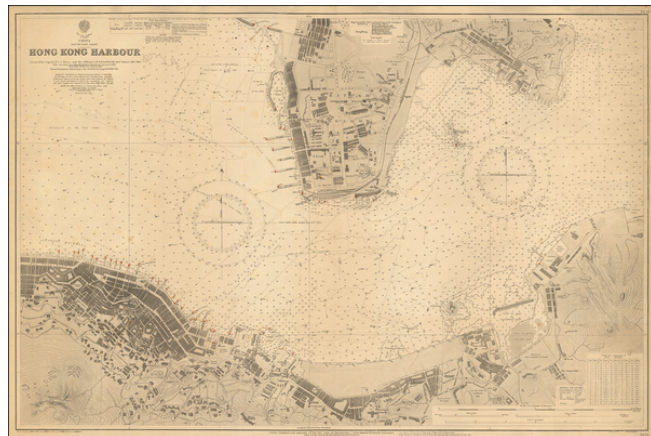
7407 La Jolla Boulevard
La Jolla, CA 92037

www.raremaps.com

(858) 551-8500
blr@raremaps.com

Hong Kong Harbour Surveyed by Captain F.C. C. Pasco and the Officers of the H.M. Surveying Ship 'Merlin', 1912-13. With corrections from Hong Kong Harbour Department Surveys to 1935. Topography chiefly from Colonial Maps . . .

Stock#: 55391
Map Maker: British Admiralty
Date: 1916 (1939)
Place: London
Color: Uncolored
Condition: VG
Size: 39.5 x 26.5 inches
Price: SOLD



Description:

Hong Kong Harbor at the outset of World War II

Scarce chart of Hong Kong Harbor, originally issued in 1916 and periodically updated through 1939.

The chart is exceptionally detailed focusing on the immediate waterfront area of Victoria Harbor and the contiguous British Kowloon Peninsula.

The detail within the chart is quite extraordinary, locating:

- Royal Naval Yards
- Chinese Chamber of Commerce
- Berlin Mission
- Piers
- Wharfs
- Railways
- Warehouses
- Factories
- Barracks
- Convents
- Tennis courts
- Hotels
- Clock tower



**Barry Lawrence Ruderman
Antique Maps Inc.**

7407 La Jolla Boulevard
La Jolla, CA 92037

www.raremaps.com

(858) 551-8500
blr@raremaps.com

**Hong Kong Harbour Surveyed by Captain F.C. C. Pasco and the Officers of the H.M.
Surveying Ship 'Merlin', 1912-13. With corrections from Hong Kong Harbour
Department Surveys to 1935. Topography chiefly from Colonial Maps . . .**

- Hospitals
- U.S. Recreation Club
- Gun Club
- Quarries
- Cement Works
- Docks
- Ship Yards
- Theaters
- Lunatic Asylum
- Gardens
- Queens College
- Belilios School
- Mosque
- St. Joseph's College
- Crickett Ground
- Waterfront Reclamation Projects

Rarity

The chart is apparently quite rare. We locate no examples of the Pasco Hong Kong Harbour chart at auction. OCLC locates 1 later example, but updated to 1947 (British National Maritime Museum).

Detailed Condition:

Minor soiling.