



# Barry Lawrence Ruderman Antique Maps Inc.

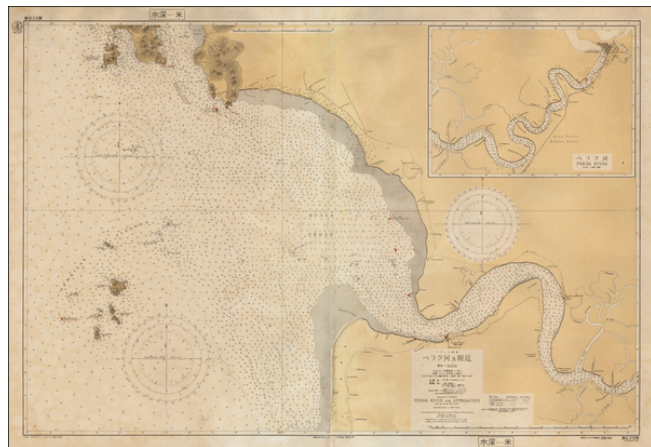
7407 La Jolla Boulevard  
La Jolla, CA 92037

www.raremaps.com

(858) 551-8500  
blr@raremaps.com

## (Malaysia) Perak River and Approaches

**Stock#:** 53483  
**Map Maker:** Maritime Safety Agency of Japan  
**Date:** 1948 circa  
**Place:** n.p.  
**Color:** Uncolored  
**Condition:** VG  
**Size:** 39 x 26 inches  
**Price:** \$ 475.00



### Description:

Rare separately issued sea chart of a part of the west coast of Malaysia, published in Japan by the Maritime Safety Agency of Japan, shortly after the Second World War.

The map extends from Pangkor Island to the mouth of the Perak River and then up river to Teluk Intan.

The map indicates that it is drawn from an 1935 British Admiralty Chart.

A very unusual chart -- the first we have ever seen.

### Detailed Condition:

Minor soiling and signs of use.