



**Barry Lawrence Ruderman  
Antique Maps Inc.**

7407 La Jolla Boulevard  
La Jolla, CA 92037

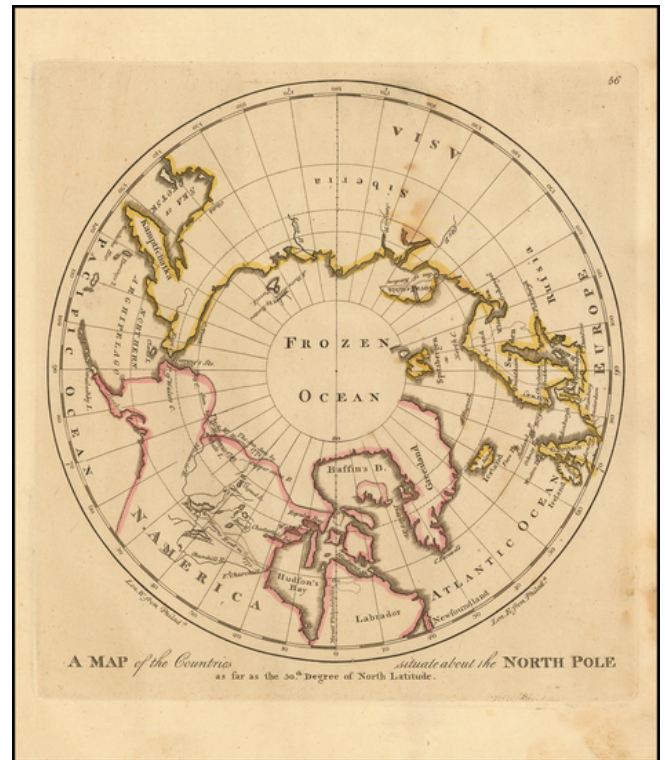
[www.raremaps.com](http://www.raremaps.com)

(858) 551-8500  
[blr@raremaps.com](mailto:blr@raremaps.com)

---

**A Map of the Countries situate about the North Pole as far as the 50th Degree of North Latitude**

**Stock#:** 51657  
**Map Maker:** Carey  
**Date:** 1814  
**Place:** Philadelphia  
**Color:** Outline Color  
**Condition:** VG  
**Size:** 10.5 x 10 inches  
**Price:** SOLD



**Description:**

Early American map showing the extent of explorations in the North Pole, with emphasis on the efforts to find a Northwest passage and Hearne's and MacKenzie's routes.

**Detailed Condition:**

Some staining.