



**Barry Lawrence Ruderman
Antique Maps Inc.**

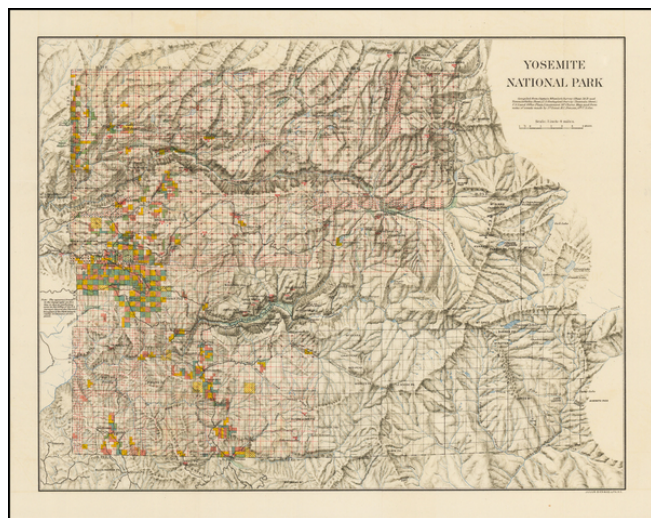
7407 La Jolla Boulevard
La Jolla, CA 92037

www.raremaps.com

(858) 551-8500
blr@raremaps.com

Yosemite National Park Compiled from Captain Wheeler's Survey (Sheet 56D and Yosemite Valley Sheet), US. Geological Survey (Yosemite Sheet), U.S. Land Office Plats, Lieutenant McClure's Maps and from notes of scouts made by 1st Lieut H.C. Benson, 4th U.S. Cav.

Stock#: 49743
Map Maker: United States Department of the Interior
Date: 1896
Place: Washington D.C.
Color: Color
Condition: VG+
Size: 14 x 10.5 inches
Price: SOLD



Description:

Scarce Early Map of Yosemite National Park

Finely executed map of Yosemite Valley, published in the *Report of the Acting Superintendent of the Yosemite National Park, 1896*.

The map is a fine amalgam of sources, drawing on the most important works of the prior 2 decades as sources.

The map presents a remarkable topographical view of Yosemite National Park, with Yosemite Valley at its center. Ironically, the map notes that "the break-in topography on this line is due to conflicting notes in the Office of the U.S. Surveyor General . . . "

Of note, the map extends east to Deadman's Pass and Mammoth Pass, incorporating the modern day areas of June Lake and Mammoth Lake, California. Red's Meadow and Red's Creek are located, the source of which would be the western boundary of the Mammoth Mountain Ski Resort.

Unlike other Yosemite Maps, this map is quite rare on the market, this being the first example we have ever seen offered for sale.



**Barry Lawrence Ruderman
Antique Maps Inc.**

7407 La Jolla Boulevard
La Jolla, CA 92037

www.raremaps.com

(858) 551-8500
blr@raremaps.com

Yosemite National Park Compiled from Captain Wheeler's Survey (Sheet 56D and Yosemite Valley Sheet), US. Geological Survey (Yosemite Sheet), U.S. Land Office Plats, Lieutenant McClure's Maps and from notes of scouts made by 1st Lieut H.C. Benson, 4th U.S. Cav.

Detailed Condition: