



**Barry Lawrence Ruderman
Antique Maps Inc.**

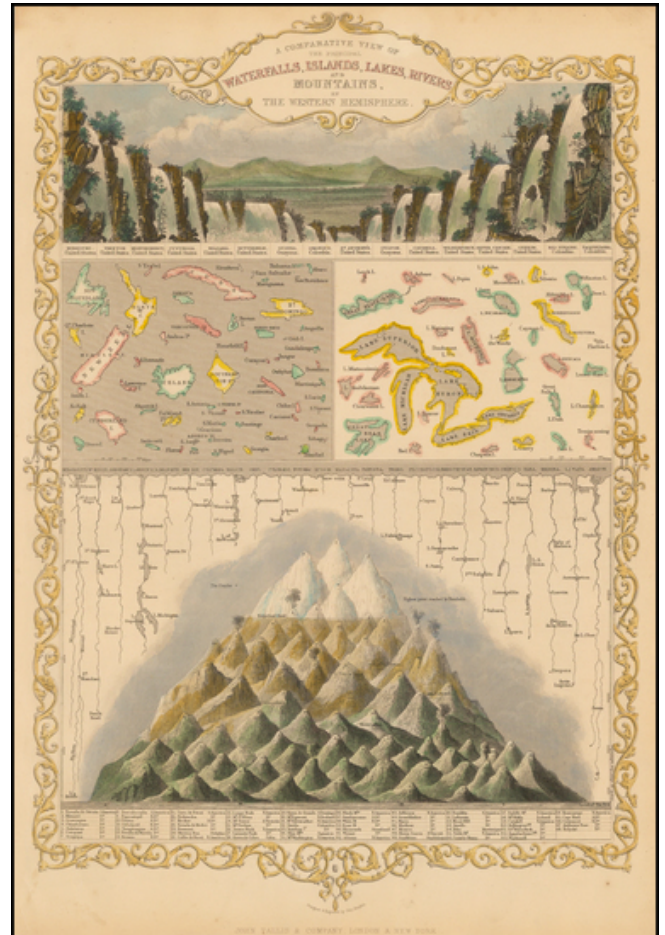
7407 La Jolla Boulevard
La Jolla, CA 92037

www.raremaps.com

(858) 551-8500
blr@raremaps.com

**A Comparative View of the Principal Waterfalls, Islands, Lakes, Rivers, and Mountains
in the Western Hemisphere**

Stock#: 49520
Map Maker: Tallis
Date: 1851
Place: London
Color: Hand Colored
Condition: VG+
Size: 13 x 9.5 inches
Price: SOLD



Description:

Stunning full color example of this marvelous map of the major Lakes, Rivers and Mountains of the World.

Engraved for R. Montgomery Martin's Illustrated Atlas. Tallis was one of the last great decorative map makers. His maps are prized for the wonderful vignettes of indigenous scenes, people, etc.

Detailed Condition: