



Barry Lawrence Ruderman Antique Maps Inc.

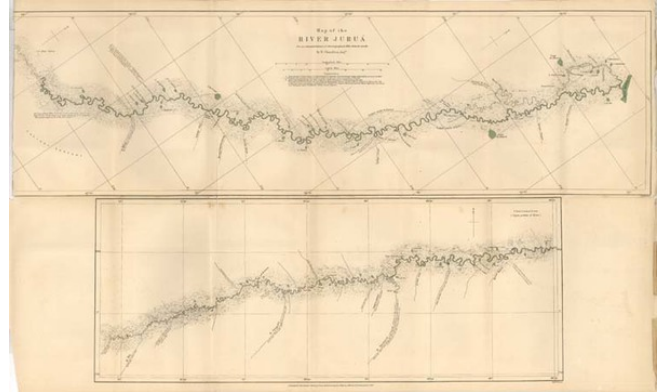
7407 La Jolla Boulevard
La Jolla, CA 92037

www.raremaps.com

(858) 551-8500
blr@raremaps.com

Map of the River Jurua ... by W. Chandless ...

Stock#: 4714
Map Maker: Royal Geographical Society
Date: 1869
Place: London
Color: Color
Condition: VG-
Size: 26 x 16 inches
Price: SOLD



Description:

Interesting map of the Jurua River, from its source to its confluence with the Amazon River. The river finds its source in the highlands east of the Ucayali River in Loreto, Peru. It flows northward through Acre, Brazil. Entering Amazonas, Brazil, it meanders eastward and then east-northeastward, emptying into the stretch of the Amazon River known as the Solimões River, near Tamaniquá. The most winding river in the Amazon basin, the Juruá is calculated to exceed 2,040 miles in length; yet it descends from only 1,486 feet above sea level. Reaired tear and a bit frayed, but a good example.

Detailed Condition: