



# Barry Lawrence Ruderman Antique Maps Inc.

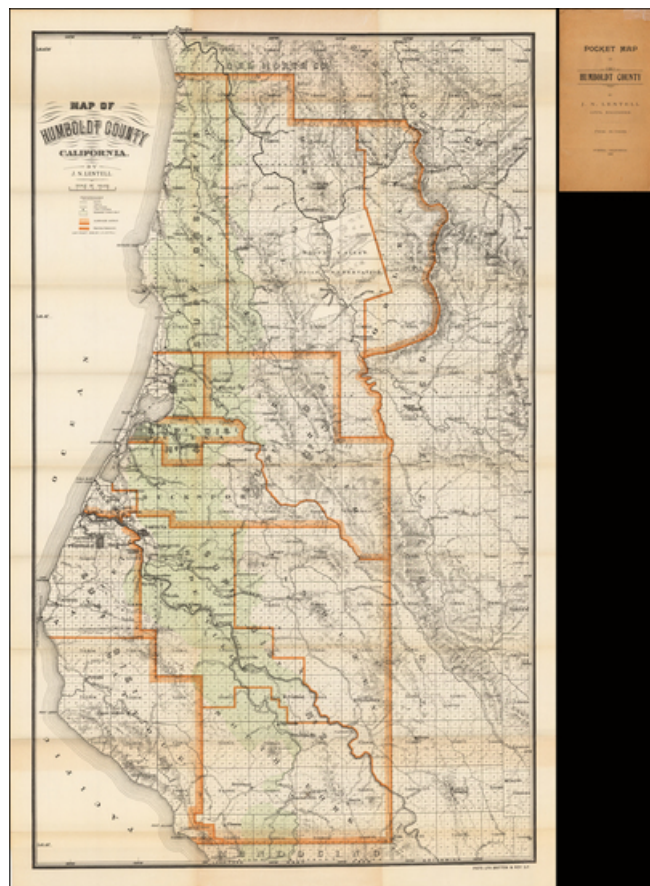
7407 La Jolla Boulevard  
La Jolla, CA 92037

[www.raremaps.com](http://www.raremaps.com)

(858) 551-8500  
[blr@raremaps.com](mailto:blr@raremaps.com)

## Map of Humboldt County by J.N. Lentell

**Stock#:** 46586  
**Map Maker:** Britton & Rey / Lentell  
**Date:** 1909  
**Place:** Eureka  
**Color:** Color  
**Condition:** VG+  
**Size:** 36 x 22 inches  
**Price:** SOLD



### Description:

Rare separately issued map of Humboldt County, California, published in Eureka.

The map provides a fine overview of the county, with towns, roads, trails, railroads, lighthouses and Redwood Timber Forests specifically noted.

JN Lentell's work including maps of Humboldt and Mendocino Counties, as well as a plan of the town of Eureka.

The map is quite rare. An 1881, 1898 and 1903 edition are listed in OCLC (one recorded example of each). We previously offered a 1901 edition of the map, which was considerably smaller than this map, previously owned by the AT&SF. Lentell seems to have revised the map in later years, which was republished by Britton & Rey.



**Barry Lawrence Ruderman  
Antique Maps Inc.**

7407 La Jolla Boulevard  
La Jolla, CA 92037

[www.raremaps.com](http://www.raremaps.com)

(858) 551-8500  
[blr@raremaps.com](mailto:blr@raremaps.com)

---

**Map of Humboldt County by J.N. Lentell**

We note that the Huntington Library holds a copy of this edition of the map, lacking the original printed covers and with the date given as 1909?.

**Detailed Condition:**

Folding map with original printed covers.