



Barry Lawrence Ruderman Antique Maps Inc.

7407 La Jolla Boulevard
La Jolla, CA 92037

www.raremaps.com

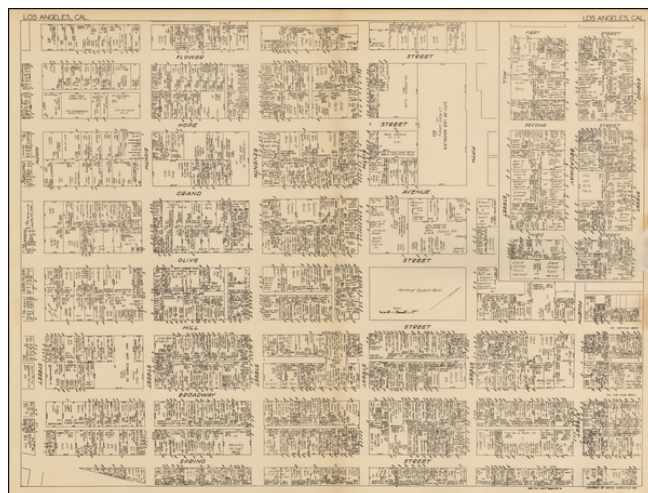
(858) 551-8500
blr@raremaps.com

[Downtown Los Angeles]

Stock#: 43264
Map Maker: Nirenstein

Date: 1929
Place: Springfield, MA
Color: Uncolored
Condition: VG+
Size: 28 x 21 inches

Price: SOLD



Description:

Highly detailed plan of the Los Angeles business district, published by Nirenstein.

The Nirenstein National Realty Map Company of Springfield, Massachusetts, produced high quality atlases of urban and suburban businesses and shopping centers. Nathan Nirenstein, who founded the company in 1925, was born in Russia in 1890 and immigrated to the United States in early 1900s. Before creating the atlas company, he was involved in the real estate business in the Springfield, Massachusetts, area. The company primarily published atlases for New England, the Middle Atlantic States, New York City, Pennsylvania, Virginia, West Virginia and the Southern states, as well as other places.

Nathan Nirenstein was also a prominent realtor and developer in the city of Springfield, where he owned and operated the Kellogg Building Realty Trust Company. The company had two subordinate operations, the Harrison Realty Company and Bowles Lunch, Inc. He personally operated both the atlas company and the real estate company until shortly before his death in 1973 at the age of 83. His businesses were taken over by his son, David Joel Nirenstein.

Although Nirenstein's National Realty Map Company discontinued its production of updated maps in 1958, an inventory of historically important maps remained. These maps were sold to libraries and historical societies throughout the United States and Canada, until the company was finally disbanded in the 1980s.

Detailed Condition: