



## Barry Lawrence Ruderman Antique Maps Inc.

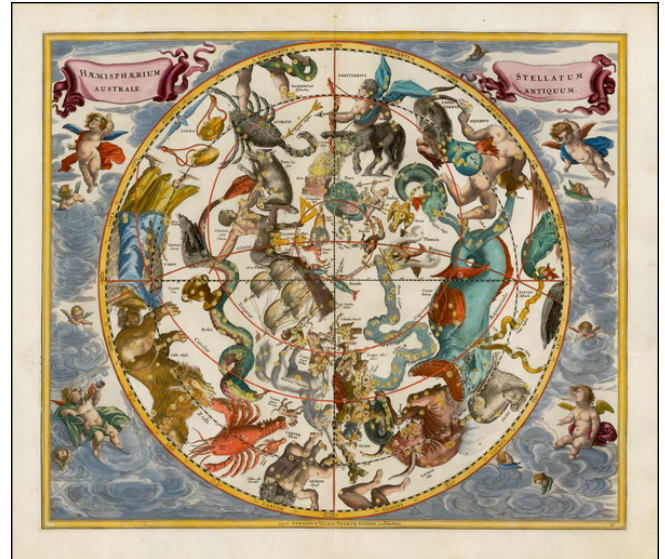
7407 La Jolla Boulevard  
La Jolla, CA 92037

[www.raremaps.com](http://www.raremaps.com)

(858) 551-8500  
[blr@raremaps.com](mailto:blr@raremaps.com)

### Haemisphaerium Stellatum Australe Antiquum

**Stock#:** 41134  
**Map Maker:** Cellarius  
**Date:** 1660 (1708)  
**Place:** Amsterdam  
**Color:** Hand Colored  
**Condition:** VG  
**Size:** 20 x 17 inches  
**Price:** SOLD



#### Description:

Nice example of this finely executed map of the Southern Sky, illustrating the constellations of the Southern Hemisphere superimposed over the earth's Southern Hemisphere, first published by Andreas Cellarius in 1660.

The map provides a fantastic image of the stars, as if seen from deeper in space, so that each of the constellations is facing in the opposite direction from the way that the same constellations would be seen from earth. This projection reflects a theory which originated with Petrus Plancius, that the stars remained in a sphere-like configuration above the earth, which moved in coordination with the earth. This theory is found in the title of his atlas, *Harmonia Macrocosmica*.

This chart gives an up-to-date mapping of the constellations of the southern hemisphere, most notable for its inclusion of the most recently observed constellations, i.e. those that could only have been seen on voyages to the deep southern latitudes.

The celestial hemisphere is surrounded by an allegorical scene showing the most modern devices for astronomical observations in the lower corners.

Andreas Cellarius was born in 1596 in Neuhausen and educated in Heidelberg. He emigrated to Holland in the early 17th century, and in 1637 moved to Hoorn, where he became the rector of the Latin School. Cellarius' best known work is his *Harmonia Macrocosmica*, first issued in 1660 by Jan Jansson, as a supplement to Jansson's *Atlas Novus*. The work consists of a series of Celestial Charts begun by Cellarius



**Barry Lawrence Ruderman  
Antique Maps Inc.**

7407 La Jolla Boulevard  
La Jolla, CA 92037

[www.raremaps.com](http://www.raremaps.com)

(858) 551-8500  
[blr@raremaps.com](mailto:blr@raremaps.com)

---

**Haemisphaerium Stellatum Australe Antiquum**

in 1647 and intended as part of a two volume treatise on cosmography, which was never issued.

Cellarius' charts are the most sought after of celestial charts, blending the striking imagery of the golden age of Dutch Cartography with contemporary scientific knowledge. The present examples come from the Valk & Schenk edition of Cellarius' atlas, which is unchanged from the 1661 edition. The 1660 and 1661 editions can be distinguished by the inclusion of a plate number in the lower right corner of the 1661 edition. The Valk & Schenk edition can be distinguished by the addition of the printer's name (Valk & Schenk) in the titles of the maps.

**Detailed Condition:**

Old color, with some recent enhancement. Several areas of verdigris cracking, expertly reinforced on verso.