



**Barry Lawrence Ruderman  
Antique Maps Inc.**

7407 La Jolla Boulevard  
La Jolla, CA 92037

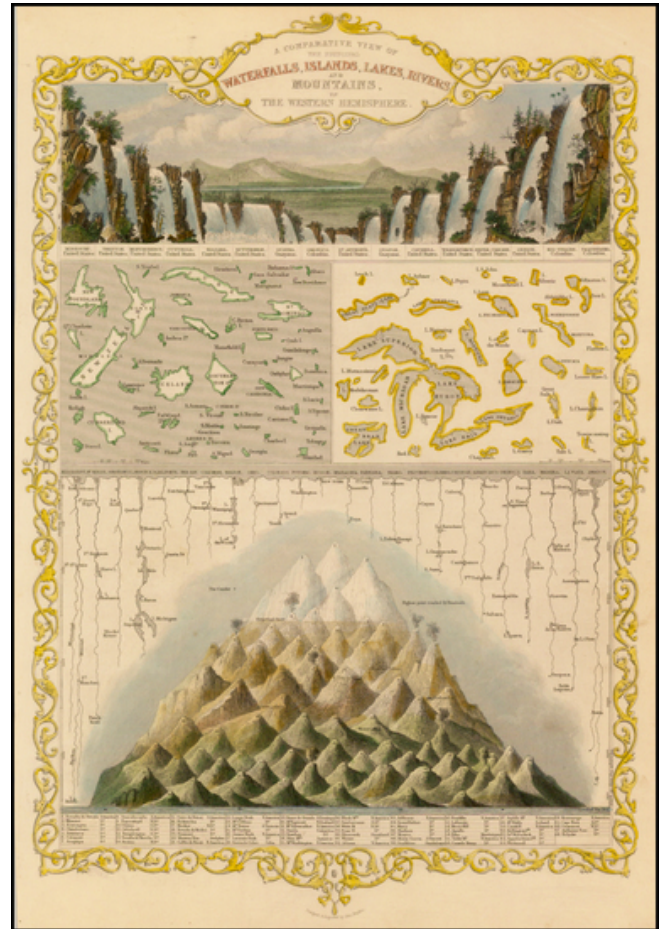
[www.raremaps.com](http://www.raremaps.com)

(858) 551-8500  
[blr@raremaps.com](mailto:blr@raremaps.com)

---

**A Comparative View of the Principal Waterfalls, Islands, Lakes, Rivers and Mountains in  
The Western Hemisphere**

**Stock#:** 40920  
**Map Maker:** Tallis  
**Date:** 1851  
**Place:** London  
**Color:** Hand Colored  
**Condition:** VG+  
**Size:** 9.5 x 13 inches  
**Price:** SOLD



**Description:**

Stunning full color example of this marvelous map.

Engraved for R. Montgomery Martin's Illustrated Atlas. Tallis was one of the last great decorative map makers. His maps are prized for the wonderful vignettes of indigenous scenes, people, etc.

**Detailed Condition:**