



Barry Lawrence Ruderman Antique Maps Inc.

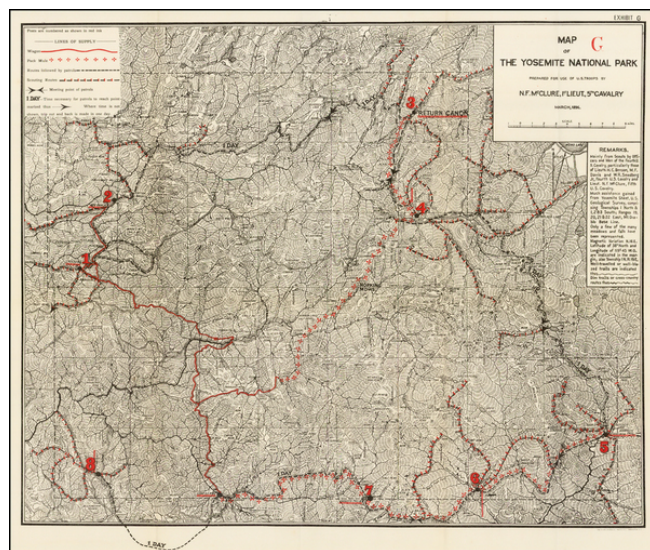
7407 La Jolla Boulevard
La Jolla, CA 92037

www.raremaps.com

(858) 551-8500
blr@raremaps.com

(Yosemite: Army Supply Lines) Map of the Yosemite National Park Prepared For Use of U.S. Troops By N.F. McClure, 1st Lieut, 5th Cavalry March 1896

Stock#: 40901
Map Maker: U.S. Government
Date: 1896 (1904)
Place: Washington
Color: Uncolored
Condition: VG+
Size: 20 x 16 inches
Price: SOLD



Description:

Supply Line map of Yosemite National Park, prepared by N.F. McClure, during the period when the Park was controlled by the U.S. Army.

The present map takes the March, 1896 map and overprints it with the Supply Lines utilized by the Army, including:

- Wagon Trails (solid red line)
- Pack Mule Trails (broken red line)
- Patrol Routes (broken black line)
- Scouting routes (red and black broken line)
- Meeting points of patrols (two arrows pointed at a single point)
- 1 Day--Time necessary for patrols to reach point marked with an arrow
- Shorter trips to meeting points are all single day trips

Includes key identifying the Lines of Supply, Wagon Roads, Pack Mule Routes, Patrol Routes, Scout Routes and other fascinating details.

McClure's map was made shortly after the establishment of Yosemite as a protected park in 1890. During this period, the Army's Fifth Cavalry Regiment controlled the park, and the map was made for their use. The map shows wagon roads, army patrol posts, direction and extent of patrols, routes used by pack trains



**Barry Lawrence Ruderman
Antique Maps Inc.**

7407 La Jolla Boulevard
La Jolla, CA 92037

www.raremaps.com

(858) 551-8500
blr@raremaps.com

**(Yosemite: Army Supply Lines) Map of the Yosemite National Park Prepared For Use of
U.S. Troops By N.F. McClure, 1st Lieut, 5th Cavalry March 1896**

supplying the posts, and cattle- and sheep-grazing areas.

McClure's map includes a number of early details, many of which reflect the Park in its earliest days. This edition of the map was drawn in 1896, with the overprint in red to show posts and patrol routes was published in the report for 1904.

Detailed Condition: