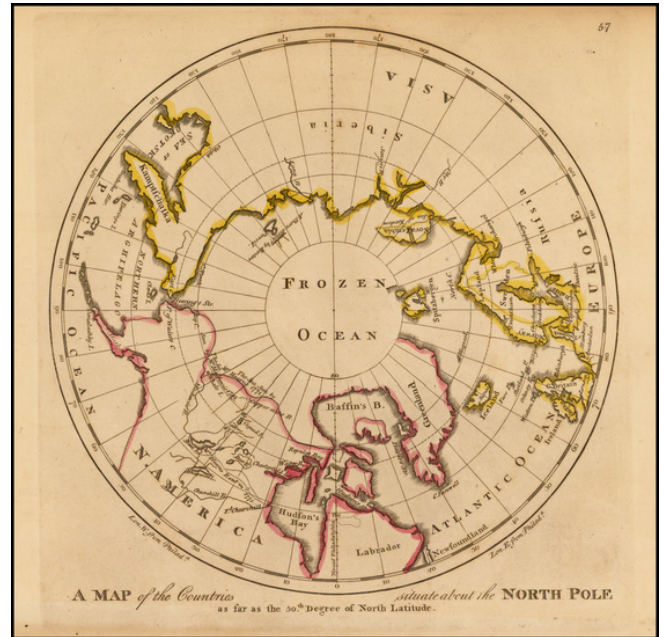


A Map of the Countries situate about the North Pole as far as the 50th Degree of North Latitude

Stock#:	40563
Map Maker:	Carey
Date:	1809
Place:	Philidelphia
Color:	Outline Color
Condition:	VG+
Size:	10.5 x 10 inches
Price:	SOLD



Description:

Early American Map showing the extent of explorations in the North Pole, with emphasis on the efforts to find a Northwest passage and Hearne's and MacKenzie's routes.

Detailed Condition: