



**Barry Lawrence Ruderman
Antique Maps Inc.**

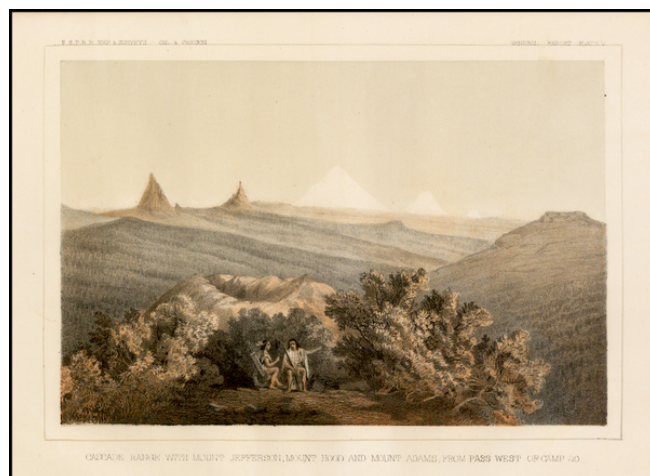
7407 La Jolla Boulevard
La Jolla, CA 92037

www.raremaps.com

(858) 551-8500
blr@raremaps.com

**Cascade Range with Mount Jefferson, Mount Hood and Mount Adams, from Pass West
of Camp 40**

Stock#: 38834
Map Maker: U.S. Pacific RR Surveys
Date: 1855
Place: Washington
Color: Hand Colored
Condition: VG
Size: 9.5 x 7 inches
Price: SOLD



Description:

One of the earliest obtainable views of Mount Jefferson, Mount Hood and Mount Adams, with Indians in the foreground.

Detailed Condition: