



**Barry Lawrence Ruderman
Antique Maps Inc.**

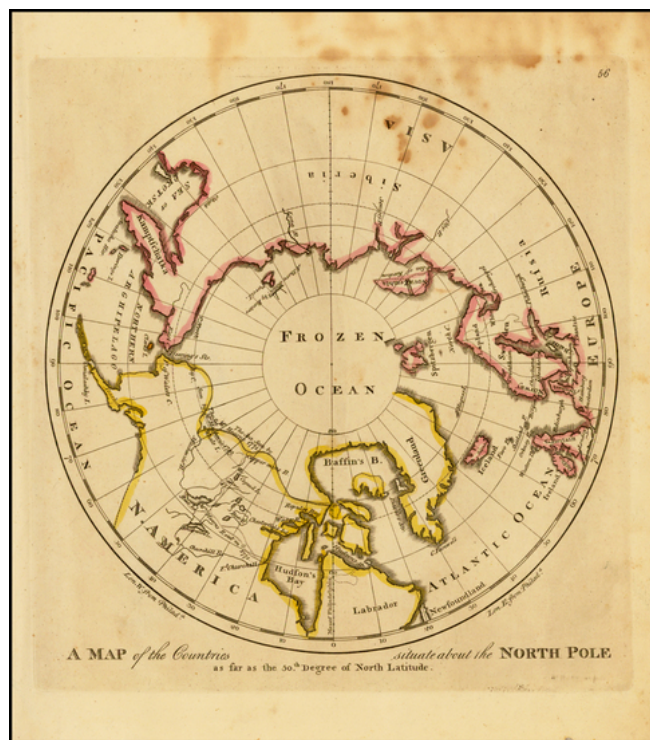
7407 La Jolla Boulevard
La Jolla, CA 92037

www.raremaps.com

(858) 551-8500
blr@raremaps.com

A Map of the Countries situate about the North Pole as far as the 50th Degree of North Latitude

Stock#: 36884
Map Maker: Carey
Date: 1809
Place: Philadelphia
Color: Uncolored
Condition: VG
Size: 10.5 x 10 inches
Price: SOLD



Description:

Early American map showing the extent of explorations in the North Pole, with emphasis on the efforts to find a Northwest passage and Hearne's and MacKenzies' routes.

Detailed Condition:

foxing in upper part of map and margin