



Barry Lawrence Ruderman Antique Maps Inc.

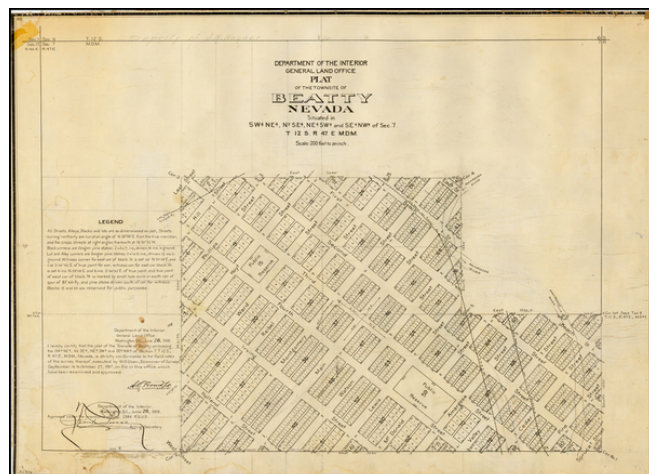
7407 La Jolla Boulevard
La Jolla, CA 92037

www.raremaps.com

(858) 551-8500
blr@raremaps.com

Plat of the Townsite of Beatty Nevada . . . June 26, 1908 . . .

Stock#: 36852
Map Maker: General Land Office
Date: 1908
Place: Washington
Color: Uncolored
Condition: VG
Size: 30.5 x 22 inches
Price: SOLD



Description:

Detailed plan of Beatty, Nevada, one of the primary Nevada mining boom towns in the first part of the 20th Century, published by General Land Office.

The present map is one of the earliest obtainable maps of the City, which had been laid out only a few years prior to this GLO plat map.

Beatty is named after "Old Man" Montillus (Montillion) Murray Beatty, a Civil War veteran and miner who bought a ranch along the Amargosa River just north of Beatty and became its first postmaster in 1905. The community was laid out in 1904 or 1905 after Ernest Alexander "Bob" Montgomery, owner of the Montgomery Shoshone Mine near Rhyolite, decided to build the Montgomery Hotel in Beatty. Montgomery was drawn to the area, known as the Bullfrog Mining District, because of a gold rush that began in 1904 in the Bullfrog Hills west of Beatty.

During Beatty's first year, wagons pulled by teams of horses or mules hauled freight between the Bullfrog district (that included the towns of Rhyolite, Bullfrog, Gold Center, Transvaal, and Springdale) and the nearest railroad, in Las Vegas, and by the middle of 1905, about 1,500 horses were engaged in this business. In October 1906, the Las Vegas and Tonopah Railroad (LV&T) began regular service to Beatty; in April 1907, the Bullfrog Goldfield Railroad (BG) reached the community, and the Tonopah and Tidewater (T&T) line added a third railroad in October 1907. The LV&T ceased operations in 1918, the BG in 1928, and the T&T in 1940. Until the railroads abandoned their lines, Beatty served as the railhead for many mines in the area, including a fluorspar mine on Bare Mountain, to the east.

Beatty's first newspaper was the Beatty Bullfrog Miner, which began publishing in 1905 and went out of



**Barry Lawrence Ruderman
Antique Maps Inc.**

7407 La Jolla Boulevard
La Jolla, CA 92037

www.raremaps.com

(858) 551-8500
blr@raremaps.com

Plat of the Townsite of Beatty Nevada . . . June 26, 1908 . . .

business in 1909. The Rhyolite Herald was the region's most important paper, starting in 1905 and reaching a circulation of 10,000 by 1909. It ceased publication in 1912.

Detailed Condition:

Minor staining and soiling. Linen backed. Trimmed to neckline, with minor chipping.