



## Barry Lawrence Ruderman Antique Maps Inc.

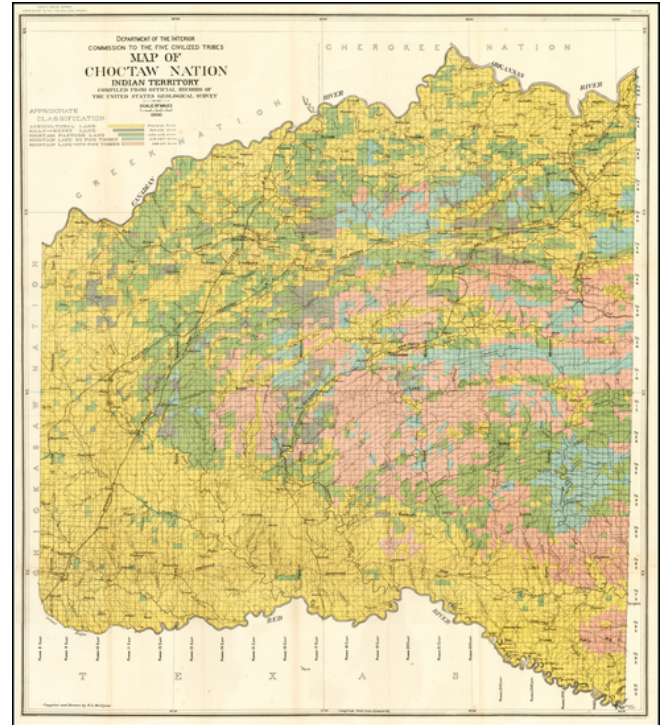
7407 La Jolla Boulevard  
La Jolla, CA 92037

[www.raremaps.com](http://www.raremaps.com)

(858) 551-8500  
[blr@raremaps.com](mailto:blr@raremaps.com)

### Map of the Choctaw Nation Indian Territory . . . 1900

**Stock#:** 34578  
**Map Maker:** United States Department of the Interior  
**Date:** 1900  
**Place:** Washington  
**Color:** Color  
**Condition:** VG+  
**Size:** 28 x 24 inches  
**Price:** SOLD



#### Description:

Striking map of the Choctaw Nation lands in Indian Territory, showing the land classifications prepared for the *Eighth Annual Report of the Commission To The Five Civilized Tribes*, published by the Department of the Interior.

The map depicts the various land classifications in the Choctaw Nation, including Agricultural, Prairie, Hilly and Mountain Lands and Lands with and without Pine Timber. The map also depicts towns, roads rivers, and other details. Detailed and decorative for the period.

#### Detailed Condition: