



# Barry Lawrence Ruderman Antique Maps Inc.

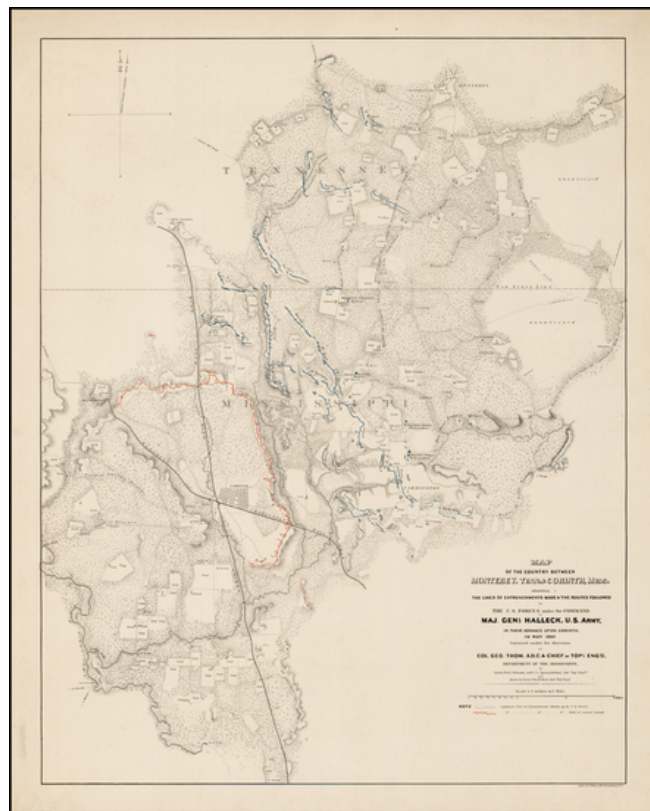
7407 La Jolla Boulevard  
La Jolla, CA 92037

[www.raremaps.com](http://www.raremaps.com)

(858) 551-8500  
[blr@raremaps.com](mailto:blr@raremaps.com)

## Map of the Country between Monterey, Tenn. & Corinth, Miss; showing The Lines of Entrenchments Made & The Routes Followed by the U.S. Forces under the Command of Maj. Genl. Halleck, U.S. Army, in their advance upon Corinth in May 1862 . . .

**Stock#:** 33166mb  
**Map Maker:** Bien & Co.  
**Date:** 1862  
**Place:** New York  
**Color:** Color  
**Condition:** VG  
**Size:** 30 x 24 inches  
**Price:** SOLD



### Description:

Highly detailed set of maps showing the battlefield positions, roads, rivers, towns, etc., between Corinth and Monterey.

Full of Battlefield information, fortification information, and a host of other information utilized by the War Department during the Civil War. Shows the lines of fortifications of both Union and Rebel forces.

Shows the area between Corinth and Monterey, along the state line separating Tennessee and Mississippi, with the positions of opposing forces shown in color.

The map was later re-issued as Plate 13:6 in "Atlas to Accompany..." part of the monumental *Atlas To Accompany The Official Records of the Union and Confederate Armies. 1861-1865.*



**Barry Lawrence Ruderman  
Antique Maps Inc.**

7407 La Jolla Boulevard  
La Jolla, CA 92037

[www.raremaps.com](http://www.raremaps.com)

(858) 551-8500  
[blr@raremaps.com](mailto:blr@raremaps.com)

---

**Map of the Country between Monterey, Tenn. & Corinth, Miss; showing The Lines of Entrenchments Made & The Routes Followed by the U.S. Forces under the Command of Maj. Genl. Halleck, U.S. Army, in their advance upon Corinth in May 1862 . . .**

**Detailed Condition:**

Some soiling and foxing throughout the map.