



**Barry Lawrence Ruderman
Antique Maps Inc.**

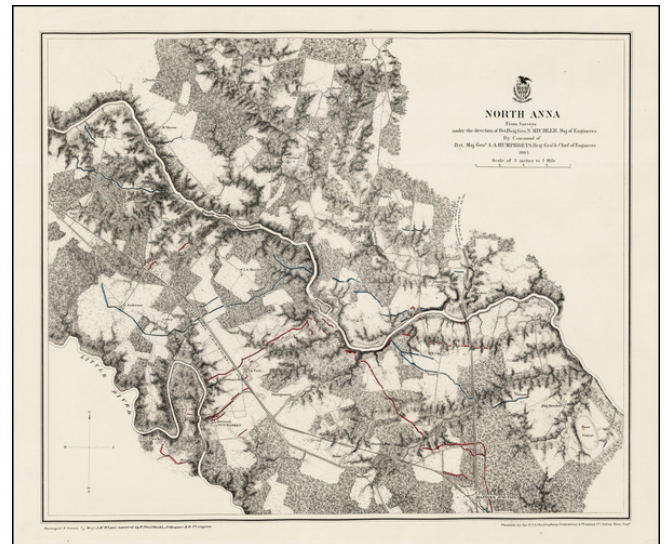
7407 La Jolla Boulevard
La Jolla, CA 92037

www.raremaps.com

(858) 551-8500
blr@raremaps.com

**North Anna From Surveys under the direction of Bvt. Brig. Gdn. N. Michler . . . By
Command of Bvt. Maj. Genl. A.A. Humphreys . . . 1867**

Stock#: 33149mb
Map Maker: United States War Dept.
Date: 1869
Place: New York
Color: Outline Color
Condition: VG+
Size: 19.5 x 16.5 inches
Price: SOLD



Description:

Fine example of this detailed map of area around North Anna.

Rumsey describes the map as follows:

Stephenson states these are a "detailed series of maps indicating fortifications, roads, railroads, houses, names of residents, fences, drainage, vegetation, and relief by hachures." First edition series on heavy paper with printed color background and light browns printed on the rivers, unbound with title page. The maps are the same as the second edition (see our copy dated 1872, #2493) but the South Mountain map is not present (it was added in 1872 to the second edition). The addition of printed color makes the maps much more readable than the second edition maps. See Stephenson 517-520 for the different editions.

Our example also lacks South Mountain.

Detailed Condition: