



**Barry Lawrence Ruderman  
Antique Maps Inc.**

7407 La Jolla Boulevard  
La Jolla, CA 92037

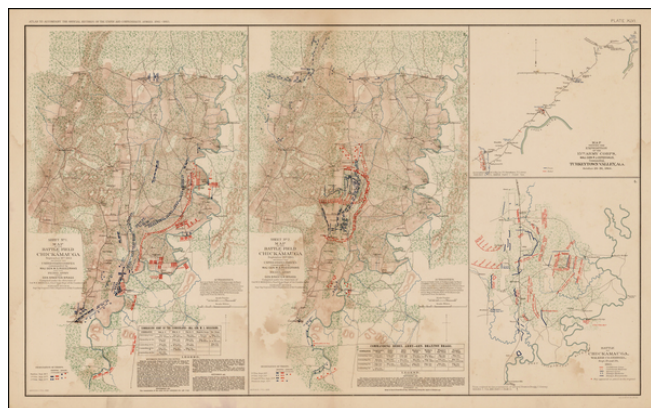
www.raremaps.com

(858) 551-8500  
blr@raremaps.com

---

**Map of the Battle-Field of Chickamauga Sept 19th 1863 . . . (and) Map of the Battle-Field of Chickamauga Sept 20th 1863 . . . (and) Battle of Chickamauga (and) Map Showing Expedition of the 15th Army Corps . . Turkeytown Valley, Ala. October 24-26, 1864**

**Stock#:** 30998  
**Map Maker:** Bien & Co.  
**Date:** 1891 -95  
**Place:** New York  
**Color:** Color  
**Condition:** VG  
**Size:** 27 x 16 inches  
**Price:** SOLD



**Description:**

Highly detailed set of maps showing the battlefield positions, roads, rivers, towns, etc., showing the battles of Chickamauga and Expedition to Turkeytown, during the Civil War.

The maps are full of Battlefield information, fortification information, and a host of other information utilized by the War Department during the Civil War. The map was issued to accompany the monumental *Atlas To Accompany The Official Records of the Union and Confederate Armies. 1861-1865*. The publication of this work was the most comprehensive compilation of maps of the Civil War.

**Detailed Condition:**

Minor waterstaining