



Barry Lawrence Ruderman Antique Maps Inc.

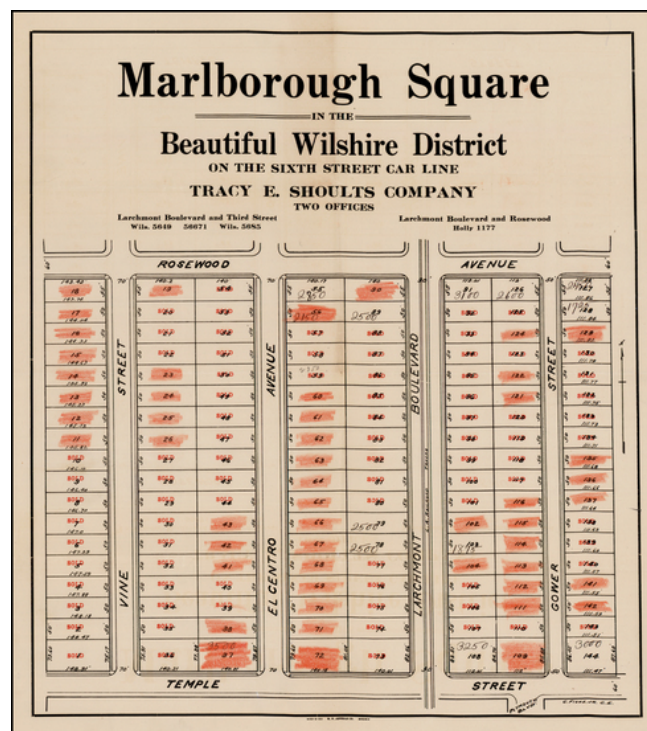
7407 La Jolla Boulevard
La Jolla, CA 92037

www.raremaps.com

(858) 551-8500
blr@raremaps.com

Marlborough Square in the Beautiful Wilshire District on the Sixth Street Car Line

Stock#: 30335
Map Maker: Tracy E. Shoults Company
Date: 1920 circa
Place: Los Angeles
Color: Uncolored
Condition: VG
Size: 14 x 16 inches
Price: SOLD



Description:

Rare early subdivision map of Marlborough, in Los Angeles, as developed by the Tracy E. Shoults Company, located just northeast of the Wilshire Country Club in Hollywood, which apparently was used by the Los Angeles Realtor Walter McKee.

The map shows the area bounded by Rosewood Avenue in the North, Temple Street in the South and Vine, El Centro, Larchmont and Gower Streets, a total of 144 lots for sale.

Includes a number of lots which have been sold, with lot prices listed.

Detailed Condition:

Includes manuscript annotations.