



# Barry Lawrence Ruderman Antique Maps Inc.

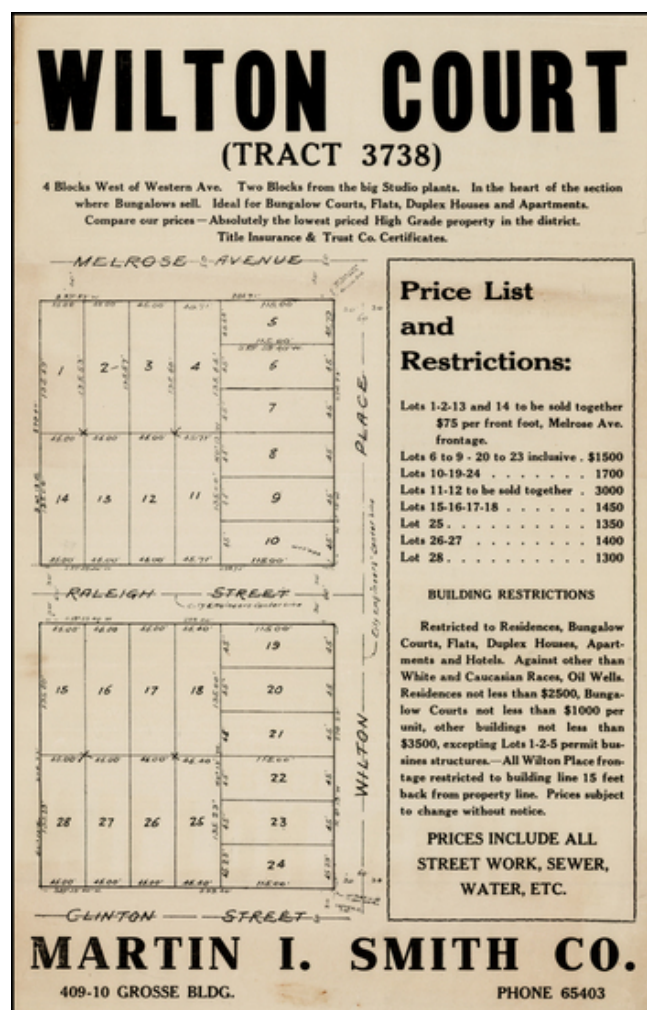
7407 La Jolla Boulevard  
La Jolla, CA 92037

www.raremaps.com

(858) 551-8500  
blr@raremaps.com

## Wilton Court (Tract 3738)

**Stock#:** 30116  
**Map Maker:**  
**Date:** 1920 circa  
**Place:**  
**Color:** Uncolored  
**Condition:** VG  
**Size:**  
**Price:** SOLD



### Description:

Tract map for Wilton Court, bounded by Wilton Place, Melrose Blvd and Clinton Place.

Includes promotional information, including the Building Restrictions:

*Restricted to Residences, Bungalow Courts, Flats, Duplex Houses, Apartments and Hotels. **Against other than White and Caucasian Races, Oil Wells.** . .*

A price list is also given.



**Barry Lawrence Ruderman  
Antique Maps Inc.**

7407 La Jolla Boulevard  
La Jolla, CA 92037

[www.raremaps.com](http://www.raremaps.com)

(858) 551-8500  
[blr@raremaps.com](mailto:blr@raremaps.com)

---

**Wilton Court (Tract 3738)**

**Detailed Condition:**