



Barry Lawrence Ruderman Antique Maps Inc.

7407 La Jolla Boulevard
La Jolla, CA 92037

www.raremaps.com

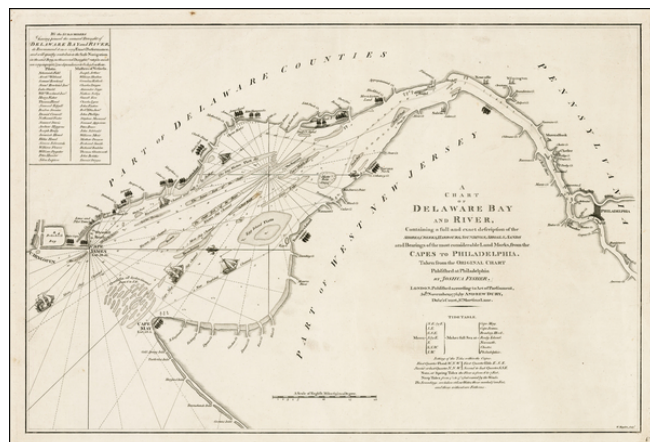
(858) 551-8500
blr@raremaps.com

A Chart of Delaware Bay and River, Containing a full and exact description of the Shores, Creeks, Harbours, Soundings, Shoals, Sands and Bearings of the most considerable Land Marks, from the Capes to Philadelphia. Taken from the Original Chart Published at Philadelphia By Joshua Fisher. . . . 1776

Stock#: 29241
Map Maker: Dury

Date: 1776
Place: London
Color: Uncolored
Condition: VG+
Size: 28 x 18.5 inches

Price: SOLD



Description:

Fine example of Dury's chart of the Delaware River, prepared in the early part of the American Revolutionary War.

Dury's chart is an early derivative of Joshua Fisher's "most important Philadelphia-vicinity plan" -- Snyder.

Fisher's chart shows the lower part of the bay and was intended to be used as a navigational aid for ships sailing toward Philadelphia. In 1775, Fisher produced an expanded chart that showed the bay and the Delaware River to just beyond Philadelphia. This was the most important map of the bay and river in the 18th century.

The map is oriented to the west so that Philadelphia lies at the far right, and Cape Henlopen at the far left. Navigational information is copious in the bay, and the main shipping lane is indicated to Philadelphia, with depths indicated along it. A list of Pilots and Masters of Vessels attesting to the accuracy of the chart is included..

Dury's edition of the map is rarest of the full size copies of Fisher's chart, the Philadelphia edition being unobtainable to most collectors. It is also the best engraved and most attractive of the editions, incorporating a number of sailing ships into the image and generally employing a much more elegant engraving style than the Faden edition of the map.



**Barry Lawrence Ruderman
Antique Maps Inc.**

7407 La Jolla Boulevard
La Jolla, CA 92037

www.raremaps.com

(858) 551-8500
blr@raremaps.com

**A Chart of Delaware Bay and River, Containing a full and exact description of the
Shores, Creeks, Harbours, Soundings, Shoals, Sands and Bearings of the most
considerable Land Marks, from the Capes to Philadelphia. Taken from the Original
Chart Published at Philadelphia By Joshua Fisher. . . . 1776**

Detailed Condition:

Fine example