



Barry Lawrence Ruderman Antique Maps Inc.

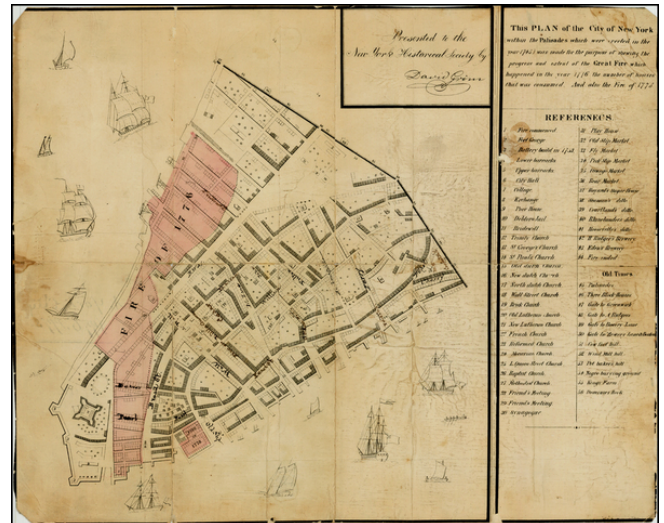
7407 La Jolla Boulevard
La Jolla, CA 92037

www.raremaps.com

(858) 551-8500
blr@raremaps.com

This Plan of the City of New York (within the Palisades which were erected in the year 1745) was made for the purpose of shewing the progress and extent of the Great Fire which happened in the year 1775 the number of houses that was consumed. And Also the Fire of 1778

Stock#: 27280
Map Maker: Valentine's Manual
Date: 1866
Place: New York
Color: Color
Condition: VG-
Size: 15 x 14 inches
Price: SOLD



Description:

Scarce map of the City of New York in 1778, showing the regions impacted by the Great Fires of 1776 and 1778.

The map includes manuscript annotation, probably added in the 19th Century. A scarce map, copies from an original manuscript map prepared by one of New York's great early historians and illustrators, David Grim.

Detailed Condition:

Laid on library silk, with occasional losses along the neat lines and some minor staining and abrasions. Includes some manuscript notes.