



## Barry Lawrence Ruderman Antique Maps Inc.

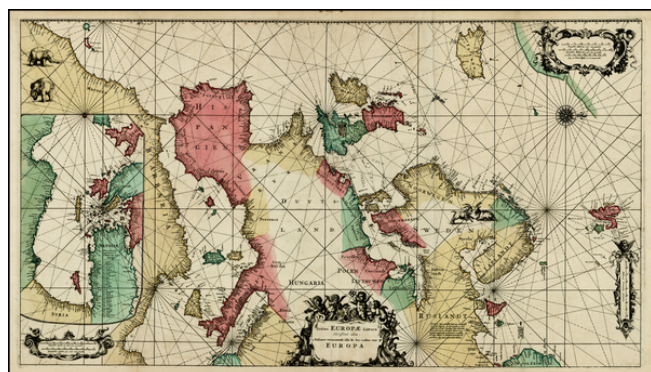
7407 La Jolla Boulevard  
La Jolla, CA 92037

[www.raremaps.com](http://www.raremaps.com)

(858) 551-8500  
[blr@raremaps.com](mailto:blr@raremaps.com)

### Totius Europae Littora Novissime adita. Pascaert vertoonende alle de See-custen van Europa [Unrecorded Proof State!]

**Stock#:** 26447  
**Map Maker:** De Wit / Renard  
**Date:** 1710 circa  
**Place:** Amsterdam  
**Color:** Hand Colored  
**Condition:** VG+  
**Size:** 34.5 x 19.5 inches  
**Price:** SOLD



#### Description:

Previously unknown proof state of De Wit's important sea chart of Europe, likely printed between 1710 and 1715, in full original color, with fine wide margins.

A beautiful Dutch Portolan style sea chart that shows an area from Morocco to the Scandinavian island of Spitsbergen and Iceland. The map extends west to east from Iceland to Dalmatia and north to south from Spitzbergen to Morocco, continuation Chart of the Mediterranean inset to Africa, several decorative crests, numerous rhumb lines, vignette depictions of Elephants in North Africa and rutting Goats in Norway. The inset map on the left shows the continuation of the Mediterranean. Richly embellished with three scales and one title cartouche, two pairs of animals, goats in Scandinavia and elephants in Africa. Winged putti holding navigational instruments surround the title cartouche.

The chart was first issued by De Wit circa 1675, and included elaborate coats of arms. In this rare proof state, the coats of arms have been removed and the interior regions re-engraved. Our investigation of the map includes correspondence with Dr. George Carhart, who reports that this state of the map is similar to an example in a 150 map De Wit Atlas in the Hungarian State Library, but notes that this copy lacks the De Wit imprint on the HSL copy. Dr. Carhart concluded that this edition was therefore either a proof created by De Wit's widow or Louis Renard, prior to Renard's publication of the first edition of his atlas, which includes a copy of the map with Renard's imprint. Dr. Carhart also notes De Wit was editing his charts just before his death and that his wife likely continued the process until the plates were sold to Renard in 1710.

A fine dark impression in flawless old color.



**Barry Lawrence Ruderman  
Antique Maps Inc.**

7407 La Jolla Boulevard  
La Jolla, CA 92037

[www.raremaps.com](http://www.raremaps.com)

(858) 551-8500  
[blr@raremaps.com](mailto:blr@raremaps.com)

---

**Totius Europae Littora Novissime adita. Pascaert vertoonende alle de See-custen van  
Europa [Unrecorded Proof State!]**

**Detailed Condition:**

Old Color.