



**Barry Lawrence Ruderman  
Antique Maps Inc.**

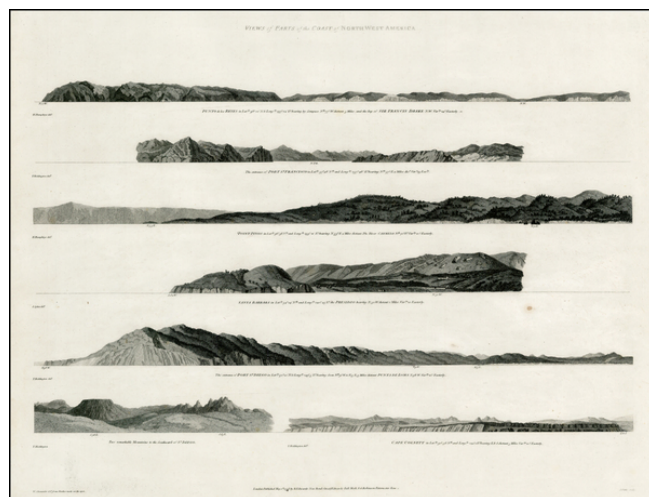
7407 La Jolla Boulevard  
La Jolla, CA 92037

[www.raremaps.com](http://www.raremaps.com)

(858) 551-8500  
[blr@raremaps.com](mailto:blr@raremaps.com)

**[California Views] Views of Parts of the Coast of Northwest America (Punto de los Reyes, San Francisco, Point Pinos, Santa Barbara, San Diego, and Cape Colnett)**

**Stock#:** 26351  
**Map Maker:** Vancouver  
**Date:** 1798  
**Place:** London  
**Color:** Uncolored  
**Condition:** VG  
**Size:** 21 x 17 inches  
**Price:** SOLD



**Description:**

Detailed set of profile views of the Coast of California, including Santa Barbara, San Diego (2 views), San Francisco, Point Reyes & Drake's Bay, and Point Pinos and Cape Colnett, south of Ensenada.

The view of Santa Barbara shows a number of buildings, including the Mission of Santa Barbara. The view of San Diego extends from Point Loma to the modern day National City area.

**Detailed Condition:**