



# Barry Lawrence Ruderman Antique Maps Inc.

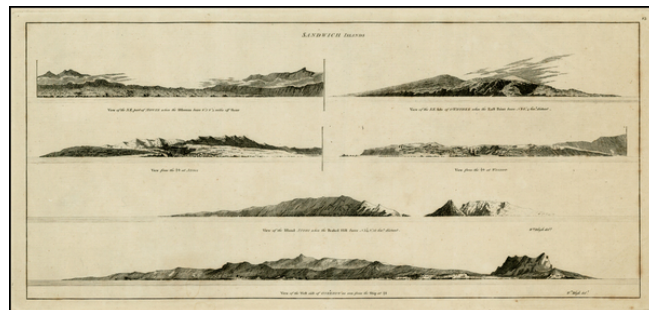
7407 La Jolla Boulevard  
La Jolla, CA 92037

[www.raremaps.com](http://www.raremaps.com)

(858) 551-8500  
[blr@raremaps.com](mailto:blr@raremaps.com)

## Sandwich Islands

**Stock#:** 25772  
**Map Maker:** Cook  
**Date:** 1784  
**Place:** London  
**Color:** Uncolored  
**Condition:** VG  
**Size:** 16 x 10 inches



**Price:** SOLD

### Description:

Set of 8 profile views of Hawaii, including views of Maui, Kauai, Hawaii and Niihau.

The first printed views of the islands. From an English edition of the Official Account of Cook's Third Voyage. The scene was sketched by John Webber, a talented young artist who accompanied Capt. James Cook on his third voyage to the Pacific in 1776-1780.

### Detailed Condition: