



# Barry Lawrence Ruderman Antique Maps Inc.

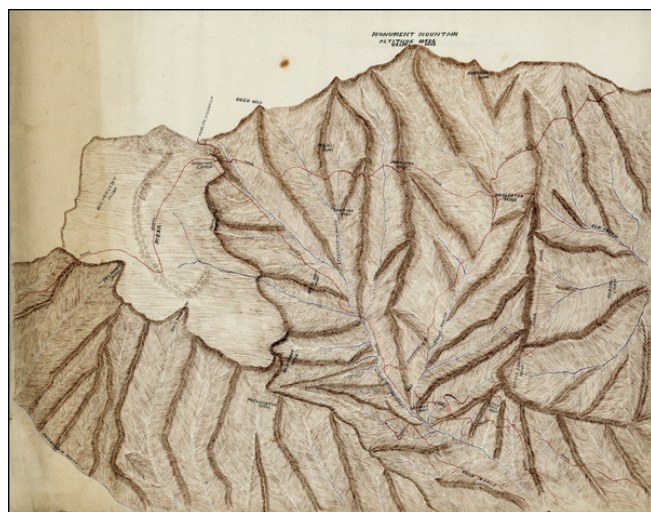
7407 La Jolla Boulevard  
La Jolla, CA 92037

[www.raremaps.com](http://www.raremaps.com)

(858) 551-8500  
[blr@raremaps.com](mailto:blr@raremaps.com)

## (Monument Mountain Topographical / Birdseye View La Plata County, Colorado) Manuscript

**Stock#:** 24940a  
**Map Maker:** Anonymous  
**Date:** 1890 circa  
**Place:** La Plata County, CO ?  
**Color:** Pen & Ink  
**Condition:** VG  
**Size:** 24 x 19 inches  
**Price:** SOLD



### Description:

Finely executed topographical birdseye view of Monument Mountain, in La Plata County, Colorado, showing the location of various mines in the region.

The map shows the State Road at the bottom of the view, along with several roads and trails, including the Orofino Wagon Road, a trail to Harmosa (Harmosa, La Plata County, Colorado) and several other unnamed trails in red. The primary gulches are shown in blue.

The Orofino Camp and Parschl Camp are also shown.

Based upon the names of the claims, we date the map to circa 1890.

Spanish explorers who visited the La Plata Mountains in the 18th century may have found gold, but mining in the region did not begin until 1873 when placer gold was found along the Animas River near the present site of Durango. In that same year placer gold was discovered along La Plata River. Production during the early years in the La Plata district is not known, but it was probably small. Lode gold was also discovered in 1873, and by the end of 1881 many locations had been made.

The output from lodes was small through 1901, but with the discovery of new deposits in 1902, output increased sharply, and through 1914 annual gold production exceeded \$100,000 (5,000 ounces).



**Barry Lawrence Ruderman  
Antique Maps Inc.**

7407 La Jolla Boulevard  
La Jolla, CA 92037

[www.raremaps.com](http://www.raremaps.com)

(858) 551-8500  
[blr@raremaps.com](mailto:blr@raremaps.com)

---

**(Momentum Mountain Topographical / Birdeye View La Plata County, Colorado)  
Manuscript**

**Detailed Condition:**