



Barry Lawrence Ruderman Antique Maps Inc.

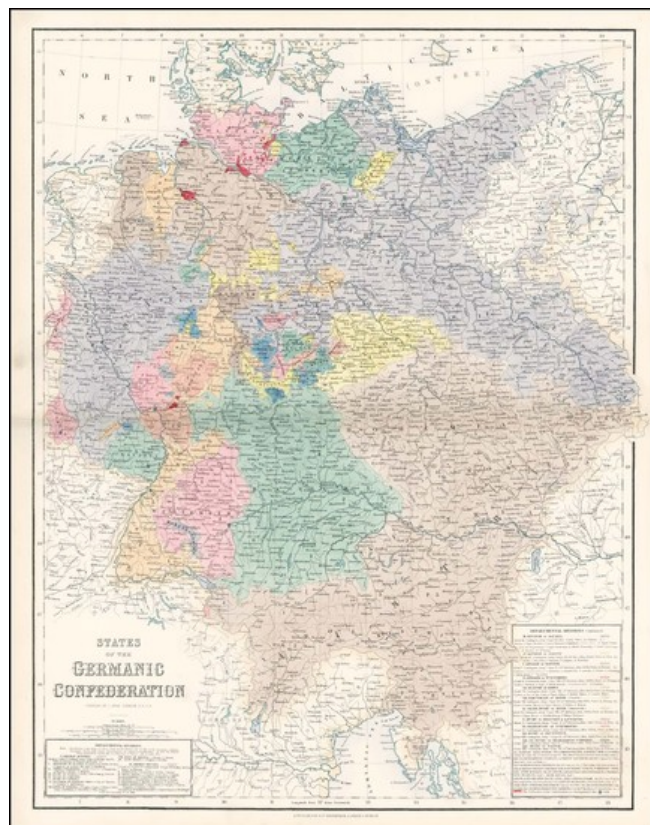
7407 La Jolla Boulevard
La Jolla, CA 92037

www.raremaps.com

(858) 551-8500
blr@raremaps.com

States of the German Confederation

Stock#: 23630
Map Maker: Fullarton & Co.
Date: 1855
Place: Edinburgh
Color: Color
Condition: VG+
Size: 21 x 17 inches
Price: SOLD



Description:

Highly detailed map of the so called German Confederation, from this scarce mid 19th Century British Atlas.

Fullarton's *Royal Illustrated Atlas*, the last highly decorative atlas published in England. Even the maps without views or figures are beautifully engraved and colored with a mixture of printed color and hand color. Swanston, Petermann, Bartholomew, Macnab and Johnson engraved the maps. The maps bear a superficial resemblance to Keith Johnston's Royal Atlas. Fullarton frequently gives the sources for his maps - for the United States maps he gives Calvin Smith and Tanner as sources.

Detailed Condition: