



# Barry Lawrence Ruderman Antique Maps Inc.

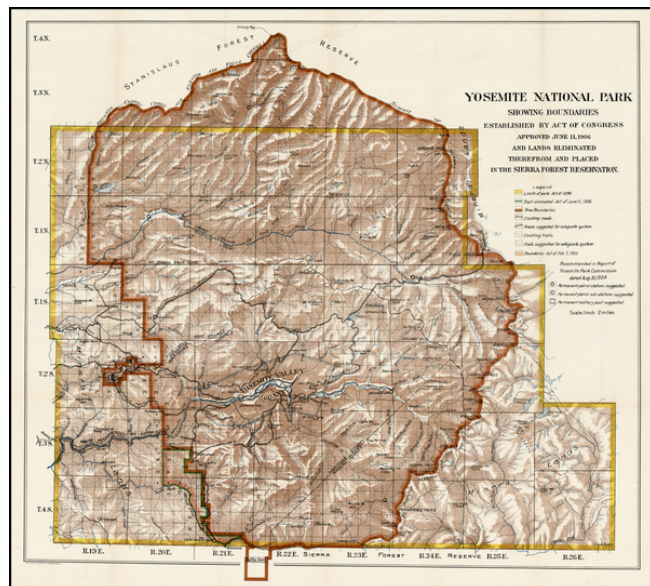
7407 La Jolla Boulevard  
La Jolla, CA 92037

www.raremaps.com

(858) 551-8500  
blr@raremaps.com

## Yosemite National Park Showing Boundaries Established By Act of Congress Approved June 11, 1906 And Lands Eliminated Therefrom and Placed in the Sierra Forest Reservation

**Stock#:** 22126  
**Map Maker:** United States Department of the Interior  
**Date:** 1906  
**Place:** Washington  
**Color:** Color  
**Condition:** VG  
**Size:** 24 x 24 inches  
**Price:** SOLD



### Description:

Highly detailed map of Yosemite, published by the Department of the Interior from surveys conducted by Marshall and Sylvester during the years 1893-94, 1896, 1898-99, and 1905.

This updated edition was published in 1906. The map shows the new Park boundaries, existing roads, proposed roads, existing trails, suggested additional trails, permanent patrol stations and sub-stations recommended by the Report of the Yosemite Park Commission dated August 31, 1904 and suggested permanent military postes. A marvelous map of the park.

### Detailed Condition: