



## Barry Lawrence Ruderman Antique Maps Inc.

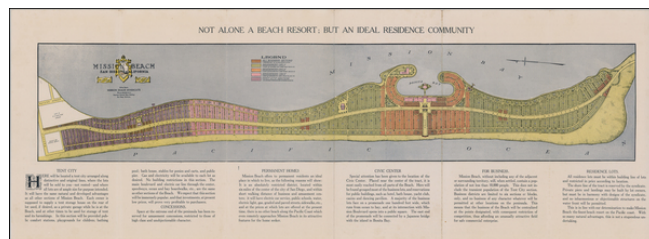
7407 La Jolla Boulevard  
La Jolla, CA 92037

[www.raremaps.com](http://www.raremaps.com)

(858) 551-8500  
[blr@raremaps.com](mailto:blr@raremaps.com)

### 1915 Mission Beach San Diego California

**Stock#:** 21142  
**Map Maker:**  
**Date:** 1915  
**Place:** San Diego  
**Color:** Color  
**Condition:**  
**Size:** 47.5 x 9.5 inches  
**Price:** SOLD



#### Description:

An early promotional map of Mission Beach, California.

Mission Bay had been discovered by Cabrillo's expedition and named "Puerto Falso." The name remained and was included on Juan Pantoja's map of 1782 and James Pascoe's 1870 *Map of the Pueblo Lands of San Diego*. Mission Beach was not developed during the San Diego land boom of the 1880's, as were La Jolla, Pacific Beach, Ocean Beach and Coronado. At the time, it was a narrow strip separating the Pacific from the Bay and considered unuseable.

It was not until John D. Spreckels acquired the land that a plan for its development was set into motion. Spreckels had taken over Coronado's development from Babcock & Story and developed a prospering hotel and Tent City. Spreckels bought parts of the future Mission Bay, Pueblo Lot 1803, and began reselling the land. The name "Mission Bay" had been proposed as early as 1888 by Rose Hartwick Thorpe, a famous American Poet and wife of carriage maker E.C. Tharpe, early resident of Pacific Beach. The name became the official name for the Bay on June 2, 1915, by a decision of the U.S. Geographic Board.

The earliest subdivision map showing all of Mission Beach is apparently Loebenstein's *Map of the Subdivision of Mission Beach, as surveyed June, 1914, by D. A. Loebenstein, C.E.* Map # 1651, which resides in the San Diego County Recorder's Office. Loebenstein had moved to San Diego from Hawaii, where he had been a surveyor. After a brief period of private work in San Diego, he would become a Lieutenant in the California Naval Militia and subsequently called into service as part of the Pacific Fleet during WWI.

#### Detailed Condition: