



# Barry Lawrence Ruderman Antique Maps Inc.

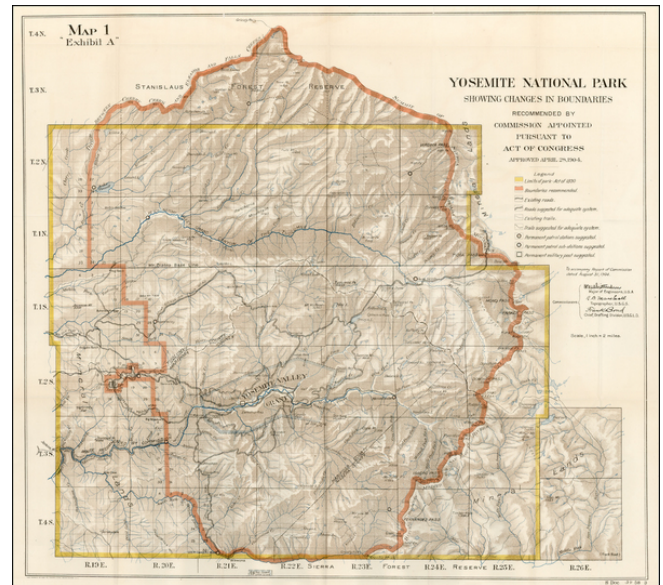
7407 La Jolla Boulevard  
La Jolla, CA 92037

www.raremaps.com

(858) 551-8500  
blr@raremaps.com

## Yosemite National Park Showing The Changes In Boundaries Recommended By Commission Appointed Pursuant to Act of Congress Approved April 28, 1904

**Stock#:** 20509  
**Map Maker:** United States Department of the Interior  
**Date:** 1906  
**Place:** Washington  
**Color:** Color  
**Condition:** VG  
**Size:** 24 x 24 inches  
**Price:** SOLD



### Description:

Highly detailed map of Yosemite, published by the Department of the Interior from surveys conducted by Marshall and Sylvester during the years 1893-94, 1896, 1898-99, and 1905.

This map was published in 1906. The map shows the park boundaries as of 1890, the newly proposed Park boundaries, existing roads, proposed roads, existing trails, suggested additional trails, permanent patrol stations and sub-stations recommended by the Report of the Yosemite Park Commission dated August 31, 1904 and suggested permanent military postes. A marvelous map of the park.

### Detailed Condition: