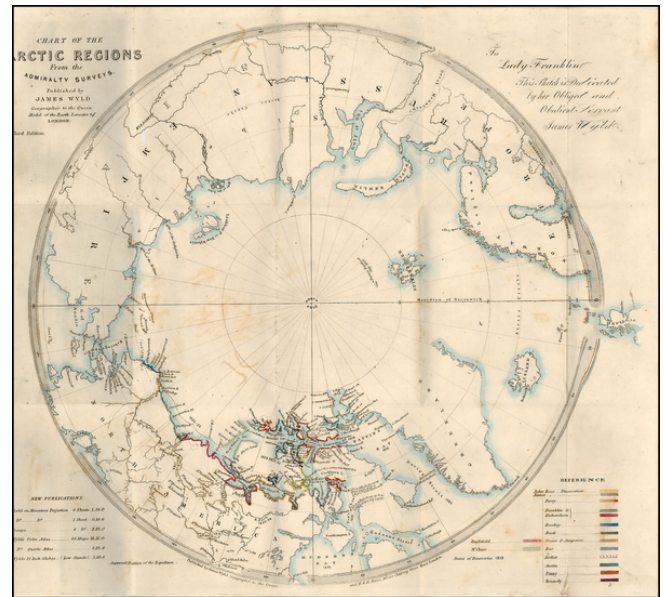


**Chart of the Arctic Regions From the Admiralty Surveys. Published by James Wyld . . .
To Lady Franklin, This Sketch is Dedicated by her Obligated Servant James Wyld.**

Stock#:	19857a
Map Maker:	Wyld
Date:	1853 circa
Place:	London
Color:	Hand Colored
Condition:	VG
Size:	16 x 15 inches
Price:	SOLD



Description:

Detailed map of the Arctic Regions, with notes on the exploration of the region.

The map and legend locate the expeditions of 16 explorers including John Ross, James Ross, Parry, Franklin & Richards, Beechey, Back, Dease & Simpson, Rae, Austin, Penny, Kennedy, Inglefield and McClure

Wyld dedicates the map to Lady Franklin, widow of the Arctic explorer Sir John Franklin. The map was apparently issued prior to McClintock's voyage aboard the Fox in 1857-1859, sponsored by Lady Franklin, which finally located evidence of the location of Franklin's death.

We previously had an example of so-called Third Edition, which also included a note locating the Belcher's Discoveries in 1853. {{ inventory detail link('30044') }}

Detailed Condition:

Laid on linen and folding into brown covers with paste down title.