



Barry Lawrence Ruderman Antique Maps Inc.

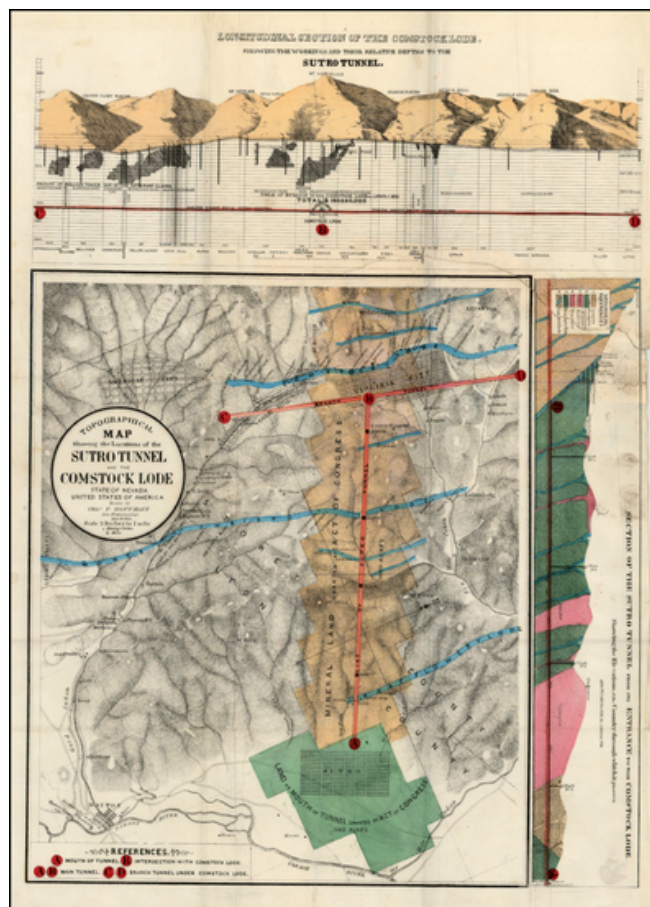
7407 La Jolla Boulevard
La Jolla, CA 92037

www.raremaps.com

(858) 551-8500
blr@raremaps.com

Topographical Map Showing the Locations of the Sutro Tunnel and the Comstock Lode State of Nevada United States of America Drawn by Chas. F. Hoffmann, San Francisco, March 1866

Stock#: 19435
Map Maker: Hoffmann / Ferd. Mayer & Co.
Date: 1866
Place: New York
Color: Hand Colored
Condition: VG
Size: 21 x 14 inches
Price: SOLD



Description:

Rare early Sutro Tunnel map, by Charles Hoffmann, who later assisted Whitney on early maps of Yosemite.

Adolph Sutro was an influential businessman in California and Nevada. He arrived in San Francisco in 1850. In 1859, he relocated to Nevada and established a mill, which he called the Metallurgical Works, in East Dayton, Nevada. His most famous project was the Sutro Tunnel, which ventilated the mines of the Comstock Lode and allowed Miners to safely bring out ores. This early map shows Dayton, American City and the Mineral Land granted by act of Congress to Sutro to establish the Tunnel, along with the Monte Christo Lode, Great Lowery Lode, and Comstock Lode. Extends to the Carson River in the South and shows Sivler City and Gold Hill, and of course Virginia City. A rare early mining map.



**Barry Lawrence Ruderman
Antique Maps Inc.**

7407 La Jolla Boulevard
La Jolla, CA 92037

www.raremaps.com

(858) 551-8500
blr@raremaps.com

**Topographical Map Showing the Locations of the Sutro Tunnel and the Comstock Lode
State of Nevada United States of America Drawn by Chas. F. Hoffmann, San Francisco,
March 1866**

Detailed Condition:

Long tear near right center of map.