



# Barry Lawrence Ruderman Antique Maps Inc.

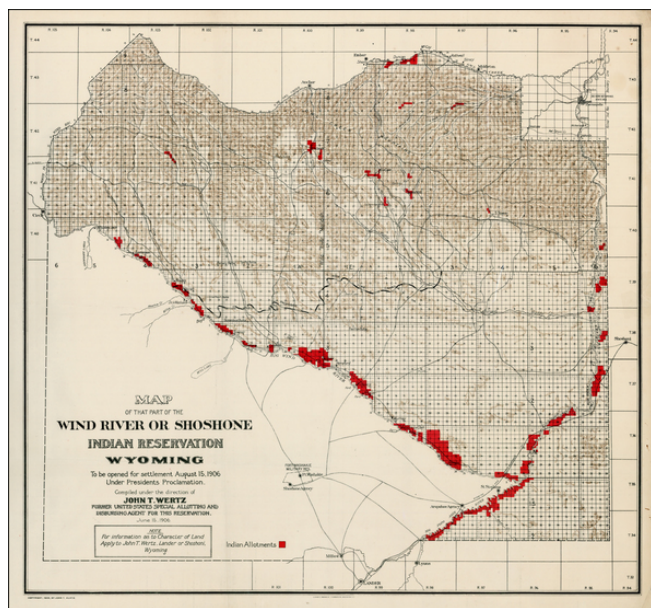
7407 La Jolla Boulevard  
La Jolla, CA 92037

www.raremaps.com

(858) 551-8500  
blr@raremaps.com

## Map of that Part of the Wind River or Shoshone Indian Reservation To Be Opened For Settlement August 15, 1906

**Stock#:** 16765  
**Map Maker:** United States Department of the Interior / Wertz.  
**Date:** 1906  
**Place:** Washington  
**Color:** Color  
**Condition:** VG+  
**Size:** 32 x 29.5 inches  
**Price:** SOLD



### Description:

Detailed map of the lands being released for settlement within the Shoshone Reservation in Wyoming. Indian allotments are shown in Red. A number of towns bordering the reservation are shown, as is Fort Washakie and the Shoshone Agency.

A fascinating large scale map, issued June 15, 1906 by the US Dept of Interior Bureau of Indian Affairs, 2 months prior to the release of the land for settlement.

After making approximately 205 allotments, Special Agent John T. Wertz was suspended in 1900 for an investigation of his work by the Inspector for the Dept of the Interior and later ordered to return home.

### Detailed Condition: